



## CME

### MONTHLY SELF-STUDY SERIES

Please read the following article and complete the self-assessment questions. Participants in the HKMA CME Programme will be awarded 1 credit point under the Programme for returning completed answer sheet on p.13 via fax (2865 0943) or by mail to the HKMA Secretariat on or before 15 July 2003. Answers to questions will be provided in the next issue of the HKMA CME Bulletin.

#### 每月自修資料

請細閱以下文章，並利用第十三頁之答題紙完成自我評估測驗。香港醫學會持續醫學進修計劃參加者如於二零零三年七月十五日前，將已填妥之答題紙傳真或寄回本會秘書處，將可獲持續醫學進修一個積分點；至於是期自我評估測驗之答案，將刊於下一期《持續醫學進修專訊》之中。(本會秘書處傳真號碼：2865 0943)

*The Hong Kong Medical Association is dedicated to providing a coordinated CME programme for all members of the medical profession. Under the HKMA CME Programme, a CME register is installed to document the CME efforts of doctors and special CME avenues are provided. The Association strives to foster a vibrant environment of CME throughout the medical profession. Both members as well as non-members of the Association are welcome to join us. You may contact the HKMA Secretariat for details of the programme.*

香港醫學會致力推動持續醫學進修，醫學團體察到業界有必要設立完善的持續進修計劃，為同僚建立有系統的進修記錄機制，以及為全科醫生提供適切的進修課程。藉著這個計劃，我們期望將優良的進修傳統推展至醫學界中每一角落，同時為業界締造一個充滿活力的進修文化。我們誠意邀請你參與醫學會持續進修計劃，不論你是否醫學會的會員，均歡迎你回來與我們一同學習，以及享用醫學會為所有醫生設立的進修記錄機制。如欲了解香港醫學會持續醫學進修計劃的詳情，請聯絡本會秘書處查詢。

## Depression and Suicide

### Dr. Lee Wing King

*M.B., Ch.B. (H.K.), M.R.C.Psych. (U.K.),  
F.H.K.A.M. (Psychiatry), F.H.K.C.Psych.  
Specialist in Psychiatry  
Senior Medical Office, Yau Matei Psychiatric  
Centre/Kwai Chung Hospital  
Adjunct Assistant Professor,  
Dept of Psychiatry, CUHK  
Honorary Clinical Supervisor, HKCFP*

### Case Vignette

A 35 year old married housewife, Madam CHAN presented to your clinic with non-specific bodily pain, malaise, subjective weight loss, reduced appetite and lack of energy. Investigations were ordered at other clinics. They all turned out to be negative.

On probing by you, Madam CHAN revealed that she was depressed with pessimistic thoughts, insomnia, psychosocial worries, early morning waking and loss of interests. At the worst time, she might have suicidal ideation.

The provisional diagnosis made was depression. Anti-depressant medication was started. She responded well in the second week with clinical improvement. Her husband was also counselled on the management plan.

### Overview of Depression

Depression is one of the commonest types of mood disorders in the city. 15% of depressive patients died of "successful" suicidal attempts. In year 2001, about 1,000 Hong Kong people died of suicide according to the report of Coroner's Court. Suicide catches a lot of media attention and doctors have inevitable liability to these unfortunate "exit" events.

### Clinical Features

Depression is characterized by the following 4 types of features:

- (a) Mood symptoms:
  - Anxiety
  - Depressed mood
  - Irritability
  - Misery
- (b) Thought symptoms:
  - Depressive cognitions (pessimistic thoughts) of past, present and future
  - Helplessness
  - Hopelessness
  - Inferiority complex
  - Lack of confidence
  - Lack of interest and enjoyment
  - Lots of worries
  - Reduced energy
  - Self-blame
  - Suicidal ideation
  - Unreasonable guilt
- (c) Physical symptoms:
  - Amenorrhoea
  - Diurnal variation of mood
  - Early morning waking
  - Insomnia
  - Loss of appetite
  - Loss of libido
  - Vague physical complaints
  - Weight loss
- (d) Behavioural symptoms:
  - Agitation
  - Bent shoulders
  - Characteristic facial features with downturn of mouth corners, vertical frowning of the center of the brow
  - Downward eye gaze

- Forward inclinations of head
- Intolerably long pauses in conversation and long delay before questions are answered
- Neglect of dress and grooming
- Psychomotor retardation
- Reduced eye-blinking
- Reduced gestural movements

The depressive syndrome is noticed by the presence of the main clinical features for more than or equal to two weeks. This is to exclude those people with normal transient mood fluctuation.

### Epidemiology

For depressive disorders, the point prevalence is about 3% for men and 5% to 9% for women. Estimates of their annual incidence vary from about 80 to 200 per 100,000 among men and from 250 to 7,800 per 100,000 for women. The life-time prevalence was estimated to be about 6% to 12%, depending on the place of studies.

The male to female ratio is about 1:2. Among women, the incidence and prevalence varies with age, the highest rate is between 35 to 45 years. The rates for men increase with age. There is no demonstrated relationship to any social class.

### Assessment

#### (a) Syndromal diagnosis

This is the basic step to assess the patient. Symptoms are probed out. Diagnostic exercise is carried out to see if symptoms qualify a syndrome of depression.

#### (b) Probing

Non-sensitive questions are used first to try to build up rapport with the patients. When patients feel ready to disclose more personal feelings or issues, sensitive questions can be joined in.

Usually when patients feel comfortable and confide in doctor, they are just too ready to talk. They seize the golden opportunity to ventilate their feelings. Ventilation itself is therapeutic to depression.

Some gestural skills are useful to offer psychological support to patients. These include offering some tissue paper to a weeping patient, gently patting the shoulder of the patient, forward leaning of body and nodding of head during listening as well as good eye contact. Allowing the patient to weep for a short while can actually save the time spent by doctors on patients. Emotional catharsis is as therapeutic and efficient as "incision and drainage" surgical procedure for skin abscess.

#### (c) Suicidal risk

There is vast literature to support the notion that asking of suicidal intent will not increase the patient's intent of suicidal attempt. Non-sensitive questions are the first priority to explore this territory. Doctors are probably the only professional to assess this area.

In most suicidal completors, a warning was signalled before their committing suicide. In a survey in the United States, interviews were held with relatives and friends of people who had committed suicide. It was found that suicidal ideas had been expressed by over two-thirds of the deceased, and clear suicidal intent by rather more than a third. Often the warning had been given to more than one person. Therefore suicidal intent is worthy to assess.

#### (d) Aetiological factors

Psychosocial adversity and life events are the treatable causes of depression in modern society, especially since the economic downturn of Hong Kong. Further assistance can be suggested to manage the problems.

### Management

#### (a) Physical treatment

##### (i) Anti-depressant medication

Previously, tricyclic anti-depressant was the mainstay of treatment. It uplifted the depressed mood and associated symptoms in 2 to 3 weeks' time. However they can cause concern in cardio-toxicity and side effect tolerability. The drug compliance was indirectly affected.

Nowadays, there are novel anti-depressants, like SSRI's, (Selective Serotonin Reuptake Inhibitor) and SNRI (Serotonin and Nonadrenaline Reuptake Inhibitor). Their safety and side effect profiles are better than tricyclic anti-depressants. The drug compliance is improved. In case of drug over-dose with novel anti-depressants, they are much safer.

The criteria for choice of anti-depressants are:

- Safety;
- Tolerability;
- Efficacy &
- Simplicity.

Common side effects of tricyclic anti-depressants are:

- Sedation;
- Constipation;
- Dryness of mouth;
- Postural hypotension;

- Blurring of vision;
- Difficulty in passing urine &
- Impotence.

These are potentially lethal when overdosed.

Common side effects of novel anti-depressants, like SSRI's and SNRI are:

- Nausea;
- Dizziness;
- Sweating;
- Insomnia &
- Fatiguability.

These are safer when overdosed. Their side effects are fewer than that of tricyclic anti-depressants. The trend is that novel anti-depressants is replacing tricyclic anti-depressants as first line choices of anti-depressants medication.

A course of anti-depressant medication is usually 6 months to 1 year. Trial of tailing off medication can be adopted to see if there is relapse.

- (ii) Adjuvant anxiolytic and hypnotic medication  
Generalised anxiety disorder precedes depression in 65% of cases. Therefore, for symptomatic control, anxiolytic medication, like benzodiazepine can be used as augmentation therapy. They are especially good for anxiolytic effect. However, dependence may be an undesirable side effect if used regularly for more than 6 weeks. Novel hypnotics are also used for sleep improvement. They are non-benzodiazepine medication and without the risk of dependence.

### (b) Psychological treatment

Several techniques can be used, such as:

- Empathetic listening
- Relaxation training
- Cognitive behavioural therapy
- Interpersonal psychotherapy
- Improvement of stress-coping strategies

Follow-up sessions are mandatory for continuation therapy and relapse prevention.

### Course and Prognosis

There is complete recovery of illness in 50% of patients. It may spontaneously remit without treatment in a few percentage of patients. About 20% of patients become chronic, that is longer than 2 years' duration. The average duration of illness lasts for 10 months. The risk of recurrence can be up to 75%.

### Self-Assessment Questions

(Please indicate true or false to the following questions.)

1. 50% of depressive patients died of suicide "successfully".
2. In year 2001, about 1,000 Hong Kong people died of suicide according to report of Coroner's Court.
3. Depression consists of 4 types of features: mood symptoms, thought symptoms, physical symptoms and behavioural symptoms.
4. The depressive syndrome is noted by the presence of main clinical features of at least 4 weeks.
5. In depression, the male to female ratio is 2 to 1.
6. The highest rate for the incidence and prevalence of depression among women is between 35 to 45 year old.
7. Probing techniques used by doctors in depressive patients include non-sensitive questions and gestural skills.
8. Asking depressive patients about suicidal intent will increase their intent of suicidal attempt.
9. In most suicidal completors, no warning is given before committing suicide.
10. SNRI and SSRI's are novel anti-depressants with better safety and side effect profiles.

### Corrigendum

In our previous issue (May 2003), one of the authors of the article named *Current Understanding of Severe Acute Respiratory Syndrome – The Hong Kong and China Experience* should be **Dr. Fok Tai Fai**. Please accept our sincere apology for the printing mistake.

### ANSWERS TO MAY 2003 ISSUE

#### 香港醫學會持續醫學進修計劃 每月自修資料二零零三年五月號答案

#### *Current Understanding of Severe Acute Respiratory Syndrome — The Hong Kong and China Experience*

1.	T	9.	F
2.	T	10.	T
3.	T	11.	T
4.	F	12.	T
5.	T	13.	T
6.	F	14.	T
7.	F	15.	F
8.	F		

Please answer the questions for each quiz below by returning the completed answer sheet printed on page 13. This exercise will attract 0.5 CME point for participants completing BOTH quizzes. Answers and explanations will be provided in the next issue.

請回答下列問題並填妥第十三頁之答題紙交回本會秘書處，參加者將可獲持續醫學進修積分點零點五分，請注意，參加者必須同時回答兩個小測驗之問題。至於今期之答案將刊於下一期《持續醫學進修專訊》之中。

## Clinical Cardiology Series

### 臨床心臟科個案研究

#### Obstructive Sleep Apnea (OSA) and Cardiovascular Disease

Which of the following statements are correct? Please explain.

1. *OSA is a risk factor for hypertension.*
2. *OSA is uncommon in female.*
3. *OSA is rare in subjects with normal body weight.*
4. *OSA is associated with acute cardiovascular events.*
5. *OSA is associated with stroke.*

The content of the Clinical Cardiology Series is provided by:

**Dr. Wong Shou Pang, Alexander**

F.R.C.P., F.H.K.A.M.(Med.), F.H.K.C.P., Specialist in Cardiology

**Dr. Li Siu Lung, Steven**

M.B., B.S.(H.K.), M.R.C.P.(U.K.), F.H.K.A.M., F.H.K.C.P., F.R.C.P.(Glasg.), Specialist in Cardiology

臨床心臟科個案研究之內容誠蒙王壽鵬醫生及李少隆醫生提供。

## Answers to May 2003 Clinical Cardiology Series

### 臨床心臟科個案研究二零零三年五月份答案

Which of the following statements concerning digoxin is true, please explain?

1. *It is principally metabolized in the liver.*  
False. 70% of the drug is eliminated unchanged through the kidney.
2. *Dialysis is the first line emergency treatment during digoxin overdose.*  
False. It has a large apparent volume of distribution mostly bound to skeletal muscle receptors and thus is not effectively removed by peritoneal dialysis or hemodialysis.
3. *Digoxin is useful in treating atrial fibrillation.*  
True. It enhances vagal effect over AV node, thus slowing resting heart rate. However, in conditions with high sympathetic tones, it should be used concomitantly with calcium channel blockers or beta-blockers.
4. *Due to its negative chronotropic effect, digoxin should be avoided in patients with congestive heart failure.*  
False. Its inotropic action enhances cardiac output, improves symptoms and hemodynamics. However, it does not reduce mortality.
5. *Digoxin is useful in patients with Wolff-Parkinson-White syndrome and atrial fibrillation.*  
False. It may accelerate antegrade conduction over the accessory pathway and may precipitate ventricular fibrillation.
6. *Digoxin is useful in patients with hypertrophic obstructive cardiomyopathy.*  
False. The inotropic effect may worsen the outflow gradient.
7. *In treating atrial fibrillation, dose of digoxin should be increased if it is used concomitantly with amiodarone.*  
False. Amiodarone, quinidine, propafenone and flecainide would all increase the serum digoxin level due to a decreased clearance.

## Dermatology Series

### 皮膚科病例研究

A 45 year old man presented with disfigured left big toenail for more than one year. He reported mild toenail improvement after a course of systemic antifungal treatment but not complete resolution. The patient enjoyed good past health and there was no history of hyperuricaemia or diabetes mellitus. He was not on any concurrent drug treatment.

1. *What are the physical signs shown in the clinical photo?*
2. *What is the most likely clinical diagnosis?*
3. *Why did the patient report improvement of nail with previous systemic antifungal treatment?*
4. *What initial investigations would you perform?*
5. *What are the treatments?*



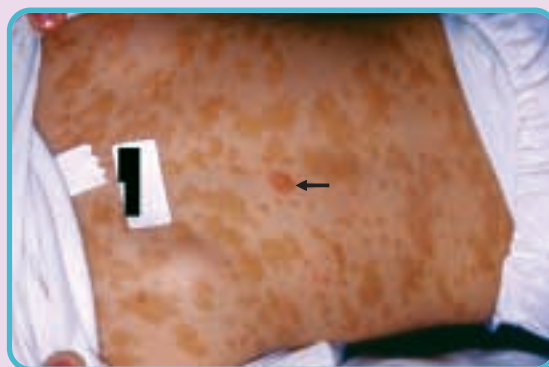
The content of the Dermatology Series is provided by:  
**Dr. Tang Yuk Ming, William** and **Dr. Chan Loi Yuen**  
Specialist in Dermatology & Venereology  
皮膚科病例研究之內容誠蒙鄧旭明醫生及陳來源醫生提供。

## Answers to May 2003 Dermatology Series

### 皮膚科病例研究二零零三年五月份答案

A 4 year old girl presented with itchy skin rash over trunk and limbs since she was few months of age. The rash was itchy and may swell after scratching or bathing. Her family history was unremarkable. Physical examination revealed multiple yellow-tan maculopapular lesions mainly on her trunk. A wheal was formed upon rubbing. (see arrow)

1. *What is the clinical diagnosis?*  
The diagnosis is urticaria pigmentosa (UP). UP is a form of mastocytosis with mast cell proliferation mainly in the skin.
2. *What is the diagnostic clinical sign in this condition?*  
Darier's sign. It refers to the urtication, erythema and itch after the skin lesion is being rubbed or scratched. Release of histamine and other mediators from mast cells may be provoked by skin friction; extremes of heat or cold; exercise; ingestion of hot beverages, spicy food, ethanol and drugs (such as NSAIDs, opiate analgesics, quinine, iodine-containing X-ray contrast media); and insect's sting.
3. *How would you confirm your clinical diagnosis?*  
The diagnosis of UP can be confirmed by skin biopsy which shows increased mast cells in the dermal papillae, particularly near blood vessels. Mast cells can be more clearly demonstrated by special stains such as toluidine blue and Giemsa.
4. *What are the possible complications of this dermatoses?*  
Mastocytosis can also involve other organs such as gastrointestinal tract, liver, spleen and bone marrow.



Massive release of histamine may cause flushing sensation, abdominal pain, vomiting, diarrhoea, headache, palpitation, tachycardia, hypotension, syncope and even anaphylaxis. Gastric hypersecretion due to elevated plasma histamine may cause gastritis and peptic ulceration. Bone marrow involvement can cause anaemia, bone pain and pathological fracture. Mast cell leukaemia may rarely occur.

5. *What is the treatment?*  
Patients should avoid precipitating factors. First line treatment is with antihistamines. H2 antagonists may be required in addition to H1 antagonists. Topical corticosteroid under occlusion is also effective. Disodium cromoglycate can inhibit degranulation of mast cells. Photochemotherapy has been shown to be effective. Epinephrine may be needed in case of anaphylaxis as may occur after insect's sting. Half children with UP will have resolution by adulthood.

# CME Lectures for July 2003

## 二零零三年七月之進修講課

Although SARS is under control now, for the good health of our CME participants, CME Committee has decided to hold the **HKMA Structured CME Programme at QEH & KWH** at our Central Premises instead at the hospitals for the month of July.

Venue : HKMA Dr. Li Shu Pui Professional Education Centre  
2/F, Chinese Club Building  
21-22 Connaught Road Central, HK

雖然SARS疫情已受到控制，但持續進修委員會就參加者健康著想，已決定將七月份**伊利沙伯醫院**及**廣華醫院**分科進修課程於本會中環會所舉行，敬請留意！

地點：香港中環干諾道中二十一至二十二號華商會所大廈二樓  
香港醫學會李樹培醫生專業教育中心

### CME Event 講課簡介

### Time 時間

#### 10 July 2003 (Thursday)

#### HKMA Video Viewing Sessions - The Diabetic Foot

1.5 CME points awarded under the MCHK/HKMA CME Programme.


Lecture: 2:00 - 3:30 p.m.  
(Light snacks will be provided from 1:30 p.m.)  
講課：下午二時至三時三十分  
[茶點於下午一時三十分開始]

#### 13 July 2003 (Sunday)

#### HKMA Structured CME Programme at Queen Elizabeth Hospital - ENT

- Affection in Nose by Dr. Lai Hin Wang, Consultant, Dept of ENT, QEH
- Affection in Ear by Dr. Ng Kin Pong, SMO, Dept of ENT, QEH
- Affection in Throat by Dr. Chan Hay Lap, Consultant, Dept of ENT, QEH

This symposium is co-organized with Queen Elizabeth Hospital.

3 CME points awarded under the MCHK/HKMA CME Programme. 


Lecture: 2:00 - 5:00 p.m.  
(Light snacks will be provided from 1:30 p.m.)  
講課：下午二時至五時  
[茶點於下午一時三十分開始]

#### 17 July 2003 (Thursday)

#### HKMA Structured CME Programme with HKS&H - Nasopharyngeal Cancers are not "Nasal"

Dr. Teo Man Lung, Peter  
M.D., M.B., B.S.(H.K.), F.R.C.P.(U.K.), F.H.K.C.R., F.H.K.A.M.(Rad.), D.M.R.T.  
Director of Oncology Centre, Hong Kong Sanatorium & Hospital

This symposium is co-organized with the Hong Kong Sanatorium & Hospital.

1 CME point awarded under the MCHK/HKMA CME Programme. 


Lecture: 2:00 - 3:00 p.m.  
(Light snacks will be provided from 1:30 p.m.)  
講課：下午二時至三時  
[茶點於下午一時三十分開始]

#### 27 July 2003 (Sunday)

#### HKMA Structured CME Programme at Kwong Wah Hospital - Endocrinology

- Update in DM Care by Dr. Lee Ka Fai, SMO, Dept of Med & Geri, KWH
- Management of Dyslipidaemia by Dr. Vincent Yeung Tok Fai, COS, Dept of Med, OLMH

This symposium is co-organized with Kwong Wah Hospital.

3 CME points awarded under the MCHK/HKMA CME Programme. 

Lecture: 2:00 - 5:00 p.m.  
(Light snacks will be provided from 1:30 p.m.)  
講課：下午二時至五時  
[茶點於下午一時三十分開始]

Registration: Please fill in and return the Registration Form together with a cheque of adequate amount made payable to "The Hong Kong Medical Association" to 5/F Duke of Windsor Social Service Building, 15 Hennessy Road, Hong Kong.


報名方法：請填妥表格連同支票寄交香港灣仔軒尼詩道十五號溫沙公爵社會服務大廈五樓，支票抬頭請書明支付「香港醫學會」。

### Reply Slip 回條

I would like to register for the following CME lecture(s):

本人欲報名參加以下講課：

Please "✓" as appropriate. 請在適用處加上「✓」號

	HKMA Members 香港醫學會會員 HK\$50 港幣五十元正	CME Participants (Non-HKMA Members) 持續進修參加者 (非香港醫學會會員) HK\$80 港幣八十元正
10 Jul 2003 Video Viewing Session VII - The Diabetic Foot 	<input type="checkbox"/>	<input type="checkbox"/>
13 Jul 2003 Structured CME Programme at QEH - ENT	<input type="checkbox"/>	<input type="checkbox"/>
17 Jul 2003 Structured CME Programme with HKS&H - Nasopharyngeal Cancers are not "Nasal"	<input type="checkbox"/>	<input type="checkbox"/>
27 Jul 2003 Structured CME Programme at KWH - Endocrinology	<input type="checkbox"/>	<input type="checkbox"/>

I enclose herewith a cheque of

現隨表格附上支票一張作為講課之報名費用：

HK\$港幣 \_\_\_\_\_

Name 姓名：\_\_\_\_\_ Tel No. 電話：\_\_\_\_\_ Fax No. 傳真：\_\_\_\_\_

HKMA Membership No. 會員編號  
or HKMA CME No. 或進修號碼：\_\_\_\_\_

Signature 簽名：\_\_\_\_\_

Data collected will be used and processed for the purposes related to the MCHK/HKMA CME Programme only. All registration fees are not refundable.  
個人資料將用於有關香港醫學會持續醫學進修計劃之事宜。所有報名費用將不給予發還。

THE SOCIETY OF PHYSICIANS OF HONG KONG  
CME Lecture July 4, 2003 (Friday)  
**Update on Management of Airway Diseases**

**Speaker** : **Dr. Leung Chung Chuen, Roland (梁宗存醫生)**  
Specialist in Respiratory Medicine  
MD, FRACP, FHKAM(Med.)

**Chairman** : **Dr. Lam Tat Chung, Paul (林達聰醫生)**  
President, The Society of Physicians of Hong Kong  
FRCP, FHKAM(Medicine), FHKAM(Psychiatry)

Place : HKMA Dr. Li Shu Pui Professional Education Centre

Time : 1:30 pm Light Lunch  
2:00-3:00 pm Lecture

Sponsor : Pfizer Corporation HK Ltd.  
& Boehringer Ingelheim (HK) Ltd.

CME Points : Under application

Open to doctors free of charge.  
On first-come first-served basis.

To register, please affix your name card to the space and fax  
to Ms. Kandy Wan **2807 2496**  
Telephone for enquiry: 2811 9711

Space for Name Card

THE SOCIETY OF PHYSICIANS OF HONG KONG  
CME Lecture July 18, 2003 (Friday)  
**Arthritis – Orthopaedic Aspects**

**Speaker** : **Dr. Ko Chi Kuen (高志權醫生)**  
Specialist in Orthopaedics & Traumatology  
MBChB(CUHK), FRCS(Edin), FCSHK, FHKCOS, FHKAM(Ortho)

**Chairman** : **Dr. Lam Tat Chung, Paul (林達聰醫生)**  
President, The Society of Physicians of Hong Kong  
FRCP, FHKAM(Medicine), FHKAM(Psychiatry)

Place : HKMA Dr. Li Shu Pui Professional Education Centre

Time : 1:30 pm Light Lunch  
2:00-3:00 pm Lecture

Sponsor : Pfizer Corporation HK Ltd.  
& Pharmacia Asia Ltd.

CME Points : Under application

Open to doctors free of charge.  
On first-come first-served basis.

To register, please affix your name card to the space and fax  
to Ms. Janice Cheng **2579 0599**  
Telephone for enquiry : 2963 5524

Space for Name Card

# The Society of Physicians of Hong Kong

The Society regularly organises educational programs for medical doctors. Most of these meetings are open to doctors free of charge. Programs will be held on weekdays at lunch or evening time, and on Sundays after lunch. CME accreditation will be applied. Some programs will be open to registered candidates only.

Sample events of the Program can be found on page 9 of this CME Bulletin.

## Certificate in Postgraduate General Internal Medicine

You can obtain award of the certificate by:

1. Register with the program (Registration fee HK\$300.00).
2. Accumulate 10 hours of attendance.
3. Pay a certification fee (HK\$500.00).

Expected time of completion – 1 year

Open to registered medical practitioners

Limited capacity. On first-come first-served basis.

Enquires: Miss Chiu Tel: 2523 6753

**Dr. Chan Tak Hin**  
FRCP, FHKAM(Med.)  
Hon Sec

**Dr. Lam Tat Chung, Paul**  
FRCP, FHKAM(Med.), FHKAM(Psych.)  
President

---

### Reply Slip

To: **The Society of Physicians of Hong Kong**

Room 1907, Lane Crawford House, 70 Queen's Road Central, Hong Kong

I wish to enroll in the Certificate Program. I am a registered medical practitioner in Hong Kong. Enclosed please find a cheque for HK\$300.00 payable to "The Society of Physicians of Hong Kong"

Name : Dr. \_\_\_\_\_ Tel.: \_\_\_\_\_ Fax No.: \_\_\_\_\_

Address : \_\_\_\_\_

\_\_\_\_\_

This advertisement is supported by GlaxoSmithKline Limited.

# CME Calendar

## 持續進修日程

Date/Time 日期/時間	Function 活動	CME Accreditation 進修積分											Remarks/ Contact Info 備註及聯絡電話				
		MCHK & HKMA	HKCA	HKCCM	HKCEM	HKCFP	HKCOG	COHK	HKCOS	HKCORL	HKCPaed	HKCPPath		HKCP	HKCPsy	HKCR	CSHK
June 2003	<b>HKMA CME Programme</b> Monthly Self-Study Series – Depression and Suicide	1															Fax answer sheet to Fax: 2865 0943 by 15 July 2003 Ms. Christina Yuen Tel: 2861 2972
16 Jun 2003 (Mon) 8:30 – 4:30 pm	<b>Emergency Care Training (HK), Hong Kong Association of Critical Care Nursing</b> Basic Life Support Provider Course (DAY 4) ECT-HK, 1105 Wilson House, 19 Wyndham Street, Central, HK	5	5			4	5		—	2	4		—	5	—	6	
16 Jun 2003 (Mon) 5:30 – 6:30 pm	<b>Dept of OG, Princess Margaret Hospital, HKCOG</b> Topic Seminar Room 10, 2/F, Block G, Princess Margaret Hospital, Kln	1					1										Ms Ginny Chan Tel: 2990 3297
16 Jun 2003 (Mon) 7:00 – 8:30 pm	<b>Federation of Medical Societies of Hong Kong, Hong Kong Dietitians Association</b> Certificate Course on Clinical Nutrition & Therapeutic Diets– Paediatric Nutrition 4/F, Duke of Windsor Building, 15 Hennessy Road, HK	2															\$960 for whole Tel: 2527 8898
16 Jun 2003 (Mon) 7:00 – 8:30 pm	<b>St. Teresa's Hospital</b> Recent Advances in SARS Conference Room, 9/F, New Wing, St. Teresa's Hospital, 327 Prince Edward Road, Kln	2					1					1				2.5	Mandy Tel: 2856 2128
17 Jun 2003 (Tue) 1:00 – 3:30 pm	<b>CUHK – Dept of Medicine &amp; Therapeutics</b> Fundamental Course in Diabetes Management and Education – Management of Diabetes Complications (I) Ching room, Sheraton Hotel, TST, Kln	2		2		1.5	5#				2	1	1				\$250 Tel: 2632 5752
17 Jun 2003 (Tue) 6:30 – 10:00 pm	<b>Hong Kong Adventist Hospital</b> New Advances in Critical Care Medicine, Management of Stroke Trade Winds, 49/F, American Club, Exchange Square, HK	1.5															Tel: 2835 0543
17 Jun 2003 (Tue) 7:00 – 8:30 pm	<b>Federation of Medical Societies of Hong Kong, Hong Kong Thoracic Society, American College of Chest Physicians (HK &amp; Macau Chapter)</b> Certificate Course on Respiratory Disease – (V) 4/F, 15 Hennessy Road, HK	1.5															\$960 Tel: 2527 8898
17 Jun 2003 (Tue) 8:00 – 9:30 pm	<b>Quality HealthCare Medical Centre Ltd</b> Sportsmed The Hong Kong Club, 1 Jackson Road, HK	2					1		—								Ms. May Lee Tel: 2975 3245
18 Jun 2003 (Wed) 8:30 – 9:30 am	<b>Hong Kong Sanatorium &amp; Hospital</b> Intra-Arterial Therapy for Hepatocellular Carcinoma Basic Life Support Provider Course (DAY 5) ECT-HK, 1105 Wilson House, 19 Wyndham Street, Central, HK	5	5			4	5		—	2	4		—	5	—	6	Ms. Gloria Hun Tel: 2835 8878
18 Jun 2003 (Wed) 8:30 – 4:30 pm	<b>Emergency Care Training (HK), Hong Kong Association of Critical Care Nursing</b> Room 1103, 11/F, Li Shu Pui Block, Hong Kong Sanatorium & Hospital, HK	1					1					1				1	Ms. Christina Yuen Tel: 2861 2972
18 Jun 2003 (Wed) 1:00 – 3:00 pm	<b>HKDU Mong Kok Study Group</b> Allergic Rhinitis: Mechanism & Treatment Forum Rooms 1-3, G/F, Hotel Concourse, 22 Lai Chi Kok Road, Kln	1															Tel: 2388 2728 *
18 Jun 2003 (Wed) 1:00 – 3:00 pm	<b>Servier HK Ltd</b> Latest Update on Management of Hypertension Sung Room, Sheraton Hotel, TST, Kln	1															Ms. Jessie Chang Tel: 2577 1922
18 Jun 2003 (Wed) 2:00 – 3:00 pm	<b>Department of O&amp;G, United Christian Hospital</b> Intramural Pregnancy Conference Room, Hospital Library, 1/F, Block H, United Christian Hospital, Kln	1					1										Ms. Michelle Yeung Tel: 2379 4851
18 Jun 2003 (Wed) 2:00 – 4:00 pm	<b>HK Mood Disorders Centre, CUHK</b> Mood Disorders in Primary Care Training Course The Ballroom A, 2/F, Great Eagle Hotel, TST, Kln	2															Ms. Lillian Lo Tel: 2144 6004
18 Jun 2003 (Wed) 2:15 – 3:15 pm	<b>Hong Kong Doctors Union</b> Video Cassette Session – Erectile Dysfunction Rm 901, Hang Shing Building, 363 Nathan Road, Kln	1															Ms. Lam Tel: 2388 2728
19 Jun 2003 (Thu) 1:30 – 3:00 pm	<b>HKMA CME Programme, Hong Kong Sanatorium &amp; Hospital</b> HKMA Structured CME Programme with HKS&H (VI) – Gynaecological Laparoscopic Surgery in Hong Kong HKMA Dr. Li Shu Pui Professional Education Centre, 2/F, Chinese Club Building, 21-22 Connaught Road C, HK	1	1	—	—	1	1	0.5	—		1		—	1	1	1	Mem: \$50 Non-Mem: \$80 Tel: 2861 1979
19 Jun 2003 (Thu) 1:30 – 3:15 pm	<b>Hong Kong College of Family Physicians</b> Effective Treatment of Childhood Wheezing Disorders The Derby Suite, Level 3, Royal Park Hotel, Shatin, NT	1					1										Ms. Jessica Cheng Tel: 2861 0220
19 Jun 2003 (Thu) 2:00 – 4:00 pm	<b>Dept of Paediatric Surgery, Queen Elizabeth Hospital</b> Journal Club Room 6, 1/F, Block E, Queen Elizabeth Hospital, Kln	2															Dr. W.K. Kwok Tel: 2958 6989
19 Jun 2003 (Thu) 4:00 – 5:00 pm	<b>Dept of Paediatric Surgery, Queen Elizabeth Hospital</b> X-Ray Meeting Lecture Room, Lower Ground, Block J, Queen Elizabeth Hospital, Kln	1															Dr. W.K. Kwok Tel: 2958 6989
19 Jun 2003 (Thu) 7:30 – 8:30 pm	<b>Hong Kong Baptist Hospital, HKCOG</b> Management of Poor Responders and Thin Endometrium Nursing School Lecture Room, 2/F, Au Shue Hung Health Centre, HK Baptist Hospital, Kln	1					1										Ms. Polly Tam Tel: 2339 8873
20 Jun 2003 (Fri) 8:30 – 4:30 pm	<b>Emergency Care Training (HK), Hong Kong Association of Critical Care Nursing</b> Basic Life Support Provider Course (DAY 6) ECT-HK, 1105 Wilson House, 19 Wyndham Street, Central, HK	5	5			4	5		—	2	4		—	5	—	6	Ms. Christina Yuen Tel: 2861 2972

\* Colleges accreditation pending  
# Total CME points for entire course

**HKMA CME PROGRAMME — Monthly Self-Study Series**

**香港醫學會持續醫學進修計劃 — 每月自修資料**

Please return completed answer sheet to the HKMA Secretariat on or before 15 July 2003 for documentation. 1 CME point will be awarded for answering the Monthly Self-Study Series (I) and an extra 0.5 CME point for completing the Clinical Case Study (II). (Fax: 2865 0943)

請回答所有問題，並於二零零三年七月十五日前將答題紙傳真或寄回至香港醫學會。參加者將可獲持續醫學進修積分點—每月自修系列：一分；「專科個案剖析」系列：零點五分。(傳真號碼: 2865 0943)

**(I) Depression and Suicide**

(Please indicate "T" or "F" in each box.)

1	2	3	4	5
6	7	8	9	10

姓名

Name: \_\_\_\_\_

香港醫學會會員編號

或持續進修編號

HKMA Membership No.

or HKMA CME No.: \_\_\_\_\_

香港身份證號碼

HKID No.:   -     X X ( X )

簽名

Signature: \_\_\_\_\_

聯絡電話

Contact Tel. No.: \_\_\_\_\_

**(II) Clinical Case Study**

(Please answer both quizzes and write down the answers in the space provided.)

**(A) Clinical Cardiology Series**

1. \_\_\_\_\_
2. \_\_\_\_\_
3. \_\_\_\_\_
4. \_\_\_\_\_
5. \_\_\_\_\_

**(B) Dermatology Series**

1. \_\_\_\_\_
2. \_\_\_\_\_
3. \_\_\_\_\_
4. \_\_\_\_\_
5. \_\_\_\_\_

Date/Time 日期/時間	Function 活動	CME Accreditation 進修積分											Remarks/ Contact Info 備註及聯絡電話				
		MCHK & HKMA	HKCA	HKCCM	HKCEM	HKCFP	HKCOG	COHK	HKCOS	HKCORL	HKCPaed	HKCPath		HKCP	HKCPsy	HKCR	CSHK
20 – 22 Jun 2003 (Fri – Sun)	<b>HKU – Dept of Surgery, QMH, Hong Kong Chapter of American College of Surgeons</b> Advanced Trauma Life Support Program – Provider Course Skills Development Centre, Dept of Surgery, University of HK Medical Centre, Queen Mary Hospital, HK	13															Tel: 2855 4854
21 Jun 2003 (Sat) 11:00am – 12:00 noon	<b>Kowloon East Cluster, HKCOG</b> Laparoscopic Ovarian Drilling Auditorium, 8/F, Tseung Kwan O Hospital, NT	1				1											Ms. Cochinna Young Tel: 2208 0948
21 Jun 2003 (Sat) 12:30 – 7:30 pm	<b>Hong Kong Geriatrics Society</b> Annual Scientific Meeting 2003 Crystal Room 1-3, Holiday Inn Golden Mile Hotel, TST, Kln	3.5															Ms. Yvonne Tse Tel: 2733 4673
21 Jun 2003 (Sat) 1:30 – 3:45 pm	<b>United Christian Hospital &amp; Kwun Tong District Health Committee</b> Refresher Course for Health Personnel 2003 – (IV) Seminar Room 1, 1/F, Block F, United Christian Hospital, Kln	1.5															Ms. Marina Pun Tel: 2379 4888 *
21 Jun 2003 (Sat) 1:30 – 5:00 pm	<b>HKMA CME Programme, Princess Margaret Hospital, Hong Kong Society for Infectious Diseases</b> Seminar in Infectious Diseases – Focus on Food and Water Borne Infections Hospital Hall, 8/F, Block G, Princess Margaret Hospital, Kln	2.5			1.5	2	2.5	1	—			2	2	2	2.5		Tel: 2527 8285
21 Jun 2003 (Sat) 2:00 – 4:00 pm	<b>Hong Kong Association of Gerontology, Hong Kong Institute of Gerontology</b> Certificate Course on Gerontology for Medical Practitioners (IV) 1/F, Margaret Trench Medical Rehab Center, 7 Rehab Path, Lam Tin, Kln	2		2	1	1.5						—	2		1.5		Mem: \$2,200 Non-Mem: \$2,500 Mr. Andy Chung Tel: 2558 1181
21 – 22 Jun 2003 (Sat – Sun)	<b>Hong Kong Stroke Society (CANCELLED)</b> 1st Asian Pacific Conference Against Stroke Kowloon Shangri-La Hotel, TST, Kln	10															Ms. Sandy Chung Tel: 2527 8898
22 Jun 2003 (Sun) 1:00 – 5:30 pm	<b>Hong Kong Doctors Union</b> Symposium on "Dermatology & SARS" Lecture Hall, 8/F, Block G, Princess Margaret Hospital, Kwai Chung, NT	3															Tel: 2388 2728
22 Jun 2003 (Sun) 2:30 – 5:00 pm	<b>HKMA CME Programme, HKPHUDA</b> Certificate Course of Promoting Men's Health in Primary Care (V) The HKMA Dr Li Shu Pui Professional Education Centre, 2/F, Chinese Club Building, 21-22 Connaught Road C, HK	2	—	2	1	1.5#	2	0.5	—	2#	1	—	2	—	2		Course Fee: \$500 Tel: 2527 8452
23 Jun 2003 (Mon) 8:30 – 4:30 pm	<b>Emergency Care Training (HK), Hong Kong Association of Critical Care Nursing</b> Basic Life Support Provider Course (DAY 7) ECT-HK, 1105 Wilson House, 19 Wyndham Street, Central, HK	5	5			4	5		—	2	4	—	5	—	6		Ms. Christina Yuen Tel: 2861 2972
23 Jun 2003 (Mon) 7:00 – 8:30 pm	<b>Federation of Medical Societies of Hong Kong, Hong Kong Dietitians Association</b> Certificate Course on Clinical Nutrition & Therapeutic Diets – Geriatric Nutrition & Tube Feeding 4/F, Duke of Windsor Building, 15 Hennessy Road, HK	2															\$960 for whole Tel: 2527 8898
23 – 25 Jun 2003 (Mon – Wed) 9:00 am – 5:00 pm	<b>Hong Kong Association of Gerontology</b> Assessor Training for Pilot Project on Accreditation System for Residential Care Services for the Elders in Hong Kong (Course 1) 1/F, Margaret Trench medical Rehab center, 7 Rehab Path, Lam Tin, Kln	21															Mem: \$1,200 Non-Mem: \$1,500 Tel: 2717 9078
24 Jun 2003 (Tue) 8:30 – 9:30 am	<b>Dept. of O&amp;G, Pamela Youde Nethersole Eastern Hospital, HKCOG</b> Vaginal Vault Prolapse Management Venue: to be advised	1				1											Ms Angel Hui Tel: 2595 6408
24 Jun 2003 (Tue) 1:30 – 2:45 pm	<b>Hong Kong College of Family Physicians, Caritas Medical Centre</b> Nutrition Recommendations and Misconceptions for Diabetes Staff Lounge, 1/F, Wai Oi Block, Caritas Medical Centre, 111 Wing Hong Street, Shamshuipo, Kln	1				1											Ms. Helen Lo Tel: 3408 7921
24 Jun 2003 (Tue) 6:00 – 7:00 pm	<b>Hong Kong Society of Community Medicine</b> Climate Matters – The Case of Hong Kong Lecture Hall, 4/F, 15 Hennessy Road, HK	1															Dr. To May Kei Tel: 2615 8584
24 Jun 2003 (Tue) 7:00 – 8:30 pm	<b>Federation of Medical Societies of Hong Kong, Hong Kong Thoracic Society, American College of Chest Physicians (HK &amp; Macau Chapter)</b> Certificate Course on Respiratory Disease – (VI) 4/F, Duke of Windsor Bldg, Hennessy Road, HK	1.5															\$960 Tel: 2527 8898
25 Jun 2003 (Wed) 8:30 – 4:30 pm	<b>Emergency Care Training (HK), Hong Kong Association of Critical Care Nursing</b> Basic Life Support Provider Course (DAY 8) ECT-HK, 1105 Wilson House, 19 Wyndham Street, Central, HK	5	5			4	5		—	2	4	—	5	—	6		Ms. Christina Yuen Tel: 2861 2972
25 – 27 Jun 2003 (Wed – Fri) 8:45 – 5:15pm	<b>Fu Hong Society (CANCELLED)</b> Cognitive Behavior Therapy (CBT) for People with Mental Handicap The Royal Pacific Hotel, Pacific I-III, 9/F, 33 Canton Road, Kln	10#															Tel: 2745 0424
25 Jun 2003 (Wed) 1:00 – 3:00 pm	<b>HKDU Tsuen Wan Study Group</b> Management of Deafness and Tinnitus Lecture Theatre, 3/F, Yan Chai Hospital Nursing School, Yan Chai Hospital, NT	1															Dr. Kenneth Ng Tel: 2414 4881
25 Jun 2003 (Wed) 1:00 – 3:00 pm	<b>Dept. of O&amp;G, Queen Elizabeth Hospital, HKCOG</b> Topic Seminar B3, Seminar Room, Queen Elizabeth Hospital, Kln	1				1											Ms. Betty Cheng Tel: 2958 6049
25 Jun 2003 (Wed) 1:30 – 2:30 pm	<b>Hong Kong Academy of Medicine (CANCELLED)</b> Management of Sinusitis Lecture Theatre, Pathology Block, Pamela Youde Nethersole E Hospital, HK	1															Tel: 2871 8805
25 Jun 2003 (Wed) 1:30 – 2:30 pm	<b>Canossa Hospital (Caritas)</b> Correct Thinking in Infection Control 2/F, Conference Room, Canossa Hospital (Caritas), HK	1				1					1						Ms. Wendy Lee Tel: 2522 2181 Ext 102

\* Colleges accreditation pending  
# Total CME points for entire course

# CME Calendar

## 持續進修日程

Date/Time 日期/時間	Function 活動	CME Accreditation 進修積分											Remarks/ Contact Info 備註及聯絡電話			
		MCHK & HKMA	HKCA	HKCCM	HKCEM	HKCFP	HKCOG	COHK	HKCOS	HKCORL	HKCPaed	HKCPATH		HKCP	HKCPsy	HKCR
25 Jun 2003 (Wed) 2:00 – 4:00 pm	<b>HK Mood Disorders Centre, CUHK</b> Mood Disorders in Primary Care Training Course <i>The Ballroom A, 2/F, Great Eagle Hotel, TST, Kln</i>	2														Ms. Lillian Lo Tel: 2144 6004
25 Jun 2003 (Wed) 6:30 – 9:30 pm	<b>Hong Kong Association of Gerontology</b> Assessor Training for Pilot Project on Accreditation System for Residential Care Services for the Elders in Hong Kong (Course 2) – Day 1 <i>1/F, Margaret Trench Medical Rehab center, 7 Rehab Path, Lam Tin, Kln</i>	3														Mem: \$1,200 Non-Mem: \$1,500 Tel: 2717 9078
26 Jun 2003 (Thu) 12:30 – 1:30 pm	<b>Dept of O&amp;G, Prince of Wales Hospital, HKCOG</b> Perinatal Meeting <i>Seminar Room, 1/F, Prince of Wales hospital, Shatin, NT</i>	1				1										Ms. Alice Lai Tel: 2632 2810
26 Jun 2003 (Thu) 2:30 – 4:00 pm	<b>Dept of Paediatric Surgery, Queen Elizabeth Hospital</b> Audit and Research Meeting <i>Room 6, 1/F, Block E, Queen Elizabeth Hospital, Kln</i>	2														Dr. W.K. Kwok Tel: 2958 6989
26 Jun 2003 (Thu) 4:00 – 5:00 pm	<b>Dept of Paediatric Surgery, Queen Elizabeth Hospital</b> Combined Paediatric Surgery Grand Round ICU Ward, Queen Elizabeth Hospital / United Christian Hospital, Kln	2														Dr. W.K. Kwok Tel: 2958 6989
27 Jun 2003 (Fri) 8:30 – 4:30 pm	<b>Emergency Care Training (HK), Hong Kong Association of Critical Care Nursing</b> Basic Life Support Provider Course (DAY 9) <i>ECT-HK, 1105 Wilson House, 19 Wyndham Street, Central, HK</i>	5	5		4	5		—	2	4		—	5	—	6	Ms. Christina Yuen Tel: 2861 2972
27 Jun 2003 (Fri) 2:00 – 3:00 pm	<b>Union Hospital</b> Wound and Scar Management <i>Seminar Room, 2/F, Medical Centre, Union Hospital, NT</i>	1														Tel: 2608 3180
27 Jun 2003 (Fri) 6:30 – 9:30 pm	<b>Hong Kong Association of Gerontology</b> Assessor Training for Pilot Project on Accreditation System for Residential Care Services for the Elders in Hong Kong (Course 2) – Day 2 <i>1/F, Margaret Trench medical Rehab center, 7 Rehab Path, Lam Tin, Kln</i>	3														Mem: \$1,200 Non-Mem: \$1,500 Tel: 2717 9078
27 – 29 Jun 2003 (Fri – Sun)	<b>HKU – Dept of Surgery, QMH, Hong Kong Chapter of American College of Surgeons</b> Advanced Trauma Life Support Program – Provider Course <i>Skills Development Centre, Dept of Surgery, University of HK Medical Centre, Queen Mary Hospital, HK</i>	13														Tel: 2855 4854
28 Jun 2003 (Sat) 9:00 am – 10:00 am	<b>Dept. of O&amp;G, Kwong Wah Hospital, HKCOG</b> Obstetric Audit <i>Seminar Room, N10, Kwong Wah Hospital</i>	1				1										Dr. N.C. Poddar Tel: 2781 5056
29 Jun 2003 (Sun) 8:30 am – 4:00 pm	<b>Hong Kong Society of Dermatology &amp; Venereology</b> Annual Scientific Meeting 2003 <i>Ballroom, Sheraton Hotel, TST, Kln</i>	3														Ms. Shirley Lam Tel: 2527 8898
29 Jun 2003 (Sun) 2:00 – 5:00 pm	<b>HKMA CME Programme, Kwong Wah Hospital</b> HKMA Structured CME Programme at KWH (III) – Endocrinology <i>HKMA Dr. Li Shu Pui Professional Education Centre, 2/F, Chinese Club Building, 21-22 Connaught Road C, HK</i>	3	3	—	1	2	3	1.5	—	—	—	3	1	3		Mem: \$50 Non-Mem: \$80 Tel: 2861 1979
29 Jun 2003 (Sun) 2:00 – 7:00 pm	<b>CUHK – Dept of Medicine &amp; Therapeutics</b> Professional Diploma Programme in Diabetes Management and Education (Module 2) V – Quality Diabetes Care <i>Seminar Room 1, 2/F, Clinical Sciences Building, Prince of Wales Hospital, Shatin, NT</i>	5														\$28,000 for whole Tel: 2632 5752
30 Jun 2003 (Mon) 8:30 – 4:30 pm	<b>Emergency Care Training (HK), Hong Kong Association of Critical Care Nursing</b> Basic Life Support Provider Course (DAY 10) <i>ECT-HK, 1105 Wilson House, 19 Wyndham Street, Central, HK</i>	5	5		4	5		—	2	4		—	5	—	6	Ms. Christina Yuen Tel: 2861 2972
30 Jun 2003 (Mon) 7:00 – 8:30 pm	<b>Federation of Medical Societies of Hong Kong, Hong Kong Dietitians Association</b> Certificate Course on Clinical Nutrition & Therapeutic Diets – Renal Diet <i>4/F, Duke of Windsor Building, 15 Hennessy Road, HK</i>	2														\$960 for whole Tel: 2527 8898
2 Jul 2003 (Wed) 2:00 – 4:00 pm	<b>HK Mood Disorders Centre, CUHK</b> Mood Disorders in Primary Care Training Course <i>The Ballroom A, 2/F, Great Eagle Hotel, TST</i>	2														Ms. Lillian Lo Tel: 2144 6004
2 Jul 2003 (Wed) 6:30 – 9:30 pm	<b>Hong Kong Association of Gerontology</b> Assessor Training for Pilot Project on Accreditation System for Residential Care Services for the Elders in Hong Kong (Course 2) – Day 3 <i>1/F, Margaret Trench medical Rehab center, 7 Rehab Path, Lam Tin, Kln</i>	3														Mem: \$1,200 Non-Mem: \$1,500 Tel: 2717 9078
3 Jul 2003 (Thur) 2:15 – 3:15 pm	<b>Hong Kong Doctors Union</b> Video Cassette Session: Diabetes: Managing A 21st Century Lifestyle Disease <i>Room 901, Hang Shing Building, 363-373, Nathan Road, Kln</i>	1														Tel: 2388 2728
4 Jul 2003 (Fri) 6:30 – 9:30 pm	<b>Hong Kong Association of Gerontology</b> Assessor Training for Pilot Project on Accreditation System for Residential Care Services for the Elders in Hong Kong (Course 2) – Day 4 <i>1/F, Margaret Trench medical Rehab center, 7 Rehab Path, Lam Tin, Kln</i>	3														Mem: \$1,200 Non-Mem: \$1,500 Tel: 2717 9078
4 – 6 Jul 2003 (Fri – Sun)	<b>HKU – Dept of Surgery</b> Hong Kong Surgical Forum – Summer 2003 <i>5/F, Lecture Theatre, Professorial Block, Queen Mary Hospital, HK</i>	10														Ms. Venus Chan Tel: 2818 0232
5 Jul 2003 (Sat) 9:00 – 6:30 pm	<b>Faculty of Medicine, HKU</b> Hong Kong Surgical Forum – Summer 2003 <i>5th Floor Lecture Theatre, Professional Block, Queen Mary Hospital, HK</i>	5														Ms. Venus Chan Tel: 2818 0232
5 Jul 2003 (Sat) 1:00 – 4:30 pm	<b>HKMA CME Programme, Hong Kong Primary Care Foundation</b> Certificate Course for Infection Control in Private Practice (I) <i>Centenary Room, G/F, The Marco Polo Hongkong Hotel, Harbour City, TST, Kln</i>	7.5#														Whole Course Fee For Mem: \$150 For Non-Mem: \$240 Tel: 2861 1979 *

\* Colleges accreditation pending  
# Total CME points for entire course

Date/Time 日期/時間	Function 活動	CME Accreditation 進修積分													Remarks/ Contact Info 備註及聯絡電話	
		MCHK & HKMA	HKCA	HKCCM	HKCEM	HKCFP	HKCOG	COHK	HKCOS	HKCORL	HKCPaed	HKCPATH	HKCP	HKCPsy		HKCR
5 Jul 2003 (Sat) 2:00 – 4:00 pm	<b>Hong Kong Association of Gerontology, Hong Kong Institute of Gerontology</b> Certificate Course on Gerontology for Medical Practitioners (V) 1/F, Margaret Trench Medical Rehab Center, 7 Rehab Path, Lam Tin, Kln	2		2	1	1.5							—	2	1.5	Mem: \$2,200 Non-Mem: \$2,500 Mr. Andy Chung Tel: 2558 1181
5 – 6 Jul 2003 (Sat – Sun)	<b>Dept of Medicine, HKU</b> 8th Hong Kong Medical Forum Phoenix Suite, Room 301, New Wing, HK Convention & Exhibition Centre, HK	12														Ms. Denise Yu Tel: 2855 4607
6 Jul 2003 (Sun) 10:00 – 11:30 am	<b>Dept of Surgery, St. Teresa's Hospital</b> Preoperative Radiotherapy for Resectable Rectal Cancer? Is it worth it? 9/F Conference Room, Hospital Building, St. Teresa's Hospital, Kln	2													1.5	Dr. Chan Siu Hung Tel: 2771 2318
6 Jul 2003 (Sun) 1:00 – 4:00 pm	<b>CUHK – Dept of Medicine &amp; Therapeutics</b> CUHK Diploma Programme in Advanced Internal Medicine 2003-04 – Thyroid Disorder Kai Cheong Tong, G/F, Postgraduate Education Centre, Prince of Wales Hospital, Shatin, NT	3		10#		5#	0.5				18#	10#			18#	Ms. Suzanne Shek Tel: 2632 3127
6 Jul 2003 (Sun) 1:00 – 5:30 pm	<b>Hong Kong Doctors Union</b> Symposium on "Common Aging Disorders" Lecture Hall, 8/F, Block G, Princess Margaret Hospital, Kwai Chung, NT	3														Tel: 2388 2728
6 Jul 2003 (Sun) 4:30 – 7:30 pm	<b>CUHK – Dept of Medicine &amp; Therapeutics</b> CUHK Diploma Programme in Advanced Internal Medicine 2003-04 – Obesity Kai Cheong Tong, G/F, Postgraduate Education Centre, Prince of Wales Hospital, Shatin, NT	3		10#		5#	0.5				18#	10#			18#	Ms. Suzanne Shek Tel: 2632 3127
7 Jul 2003 (Mon) 7:00 – 8:30 pm	<b>Federation of Medical Societies of Hong Kong, Hong Kong Dietitians Association</b> Certificate Course on Clinical Nutrition & Therapeutic Diets – Other Therapeutic Diets 4/F, Duke of Windsor Building, 15 Hennessy Road, HK	2														\$960 for whole Tel: 2527 8898
8 Jul 2003 (Tue) 1:00 – 3:30 pm	<b>CUHK – Dept of Medicine &amp; Therapeutics</b> Fundamental Course in Diabetes Management and Education – Management of Diabetes Complications (II) Ching Room, Sheraton Hotel, TST, Kln	2		2		1.5	5#				2	1	1		2	\$250 Tel: 2632 5752
9 Jul 2003 (Wed) 1:30 – 3:00 pm	<b>Hong Kong Academy of Medicine</b> Practical Aspects of Taking a Satisfactory Cervical Smear, Uterine Fibroids Lecture Theatre, Block M, Queen Elizabeth Hospital, Kln	2														Tel: 2871 8805
9 Jul 2003 (Wed) 2:00 – 4:00 pm	<b>HK Mood Disorders Centre, CUHK</b> Mood Disorders in Primary Care Training Course The Ballroom A, 2/F, Great Eagle Hotel, TST	2														Ms. Lillian Lo Tel: 2144 6004
9 Jul 2003 (Wed) 6:30 – 9:30 pm	<b>Hong Kong Association of Gerontology</b> Assessor Training for Pilot Project on Accreditation System for Residential Care Services for the Elders in Hong Kong (Course 2) – Day 5 1/F, Margaret Trench medical Rehab center, 7 Rehab Path, Lam Tin, Kln	3														Mem: \$1,200 Non-Mem: \$1,500 Tel: 2717 9078
10 Jul 2003 (Thu) 1:30 – 3:30 pm	<b>HKMA CME Programme</b> Video Viewing Sessions – The Diabetic Foot HKMA Dr. Li Shu Pui Professional Education Centre, 2/F, Chinese Club Building, 21-22 Connaught Road C, HK	1.5	1	1		1	1	—	0.5	1	1	—	—	—	1	Mem: \$50 Non-Mem: \$80 Tel: 2861 1979
11 Jul 2003 (Fri) 6:30 – 9:30 pm	<b>Hong Kong Association of Gerontology</b> Assessor Training for Pilot Project on Accreditation System for Residential Care Services for the Elders in Hong Kong (Course 2) – Day 6 1/F, Margaret Trench medical Rehab center, 7 Rehab Path, Lam Tin, Kln	3														Mem: \$1,200 Non-Mem: \$1,500 Tel: 2717 9078
11 – 13 Jul 2003 (Fri – Sun)	<b>HKU – Dept of Surgery, QMH, Hong Kong Chapter of American College of Surgeons</b> Advanced Trauma Life Support Program – Provider Course Skills Development Centre, Dept of Surgery, University of HK Medical Centre, Queen Mary Hospital, HK	13														Tel: 2855 4854
12 Jul 2003 (Sat) 1:00 – 4:30 pm	<b>HKMA CME Programme, Hong Kong Primary Care Foundation</b> Certificate Course for Infection Control in Private Practice (II) Centenary Room, G/F, The Marco Polo Hongkong Hotel, Harbour City, TST, Kln	7.5#														Whole Course Fee For Mem: \$150 For Non-Mem: \$240 Tel: 2861 1979 *
12 Jul 2003 (Sat) 2:00 – 4:30 pm	<b>HKMA CME Programme, Kowloon Central District Health Committee, Our Lady of Maryknoll Hospital</b> Refresher Course for Health Care Providers 2002/2003 (XI) – Common Sports Injury/Repetitive Strain Injury Training Room II, 1/F, OPD Block, Our Lady of Maryknoll Hospital, Kln	2				1.5										Ms. Clara Tsang Tel: 2354 2440
13 Jul 2003 (Sun) 10:00 – 12:30 pm	<b>Hong Kong Academy of Medicine</b> Practical Aspects of Taking a Satisfactory Cervical Smear; Uterine Fibroids; Revisiting Acute Coronary Syndrome 5/F, Room B, YMCA International House, 23 Waterloo Road, Kln	3														Tel: 2871 8805
13 Jul 2003 (Sun) 2:00 – 5:00 pm	<b>HKMA CME Programme, Queen Elizabeth Hospital</b> HKMA Structured CME Programme at QEH (IV) – ENT Lecture Theatre, G/F, Block M, Queen Elizabeth Hospital, Kln	3	3	—		2	3	1.5	—	2	—	3	1	3		Mem: \$50 Non-Mem: \$80 Tel: 2861 1979

\* Colleges accreditation pending  
# Total CME points for entire course

Note: For each issue of the CME Bulletin, we shall try our best to include all the CME activities for the month, which are made known to the Association Secretariat. The credit points awarded by each college are herein indicated for members' reference only. While we try our best to ensure the information to be most accurate and up-to-date, members interested in any of these functions are advised to check with the respective organizers for confirmation of the details.

**Pharmaceutical advertisements are welcome. For advertising rates and placement details, please contact Ms. Cynthia Chan, Executive Officer at Tel: 2527 8452, Fax: 2865 0943 or email: cynthia@hkma.org**