



## MONTHLY SELF-STUDY SERIES

Please read the following article and complete the self-assessment questions. Participants in the HKMA CME Programme will be awarded 1 credit point under the Programme for returning completed answer sheet on p.11 via fax (2865 0943) or by mail to the HKMA Secretariat on or before **15 June 2004**. Answers to questions will be provided in the next issue of the HKMA CME Bulletin.

## 每月自修資料

請細閱以下文章，並利用第十一頁之答題紙完成自我評估測驗。香港醫學會持續醫學進修計劃參加者如於**二零零四年六月十五日前**，將已填妥之答題紙傳真或寄回本會秘書處，將可獲持續醫學進修一個積分點；至於是期自我評估測驗之答案，將刊於下一期《持續醫學進修專訊》之中。  
(本會秘書處傳真號碼：2865 0943)

## Doctors, Please Have a CIDER Before You Prescribe Benzodiazepines to Your Patients.

**Dr. Cheng Chi Man**

M.B., B.S.(H.K.), M.R.C.G.P.(U.K.), D.F.M.(C.U.H.K.),  
P.Dip.Com.Psych.Med.H.K.

### Abstract

This article reviews the history, the use and misuse of benzodiazepines. A small trick, **CIDER**, is introduced to help doctors to remember and to follow the "Revised Guidelines on the Proper Prescription and Dispensing of Dangerous Drugs by Registered Medical Practitioners".

### The History

*Librium* was the first benzodiazepine to be marketed, by Roche in March 1960, after its approval by the FDA in February 1960. Its discovery was by no means accidental, unlike the discoveries of many wonder drugs. It was one of the research products by Dr. Leo Sternbach in an attempt to find a substitute for the phenothiazines, which were the treatment of choice for anxiety at that time. However, the many side-effects and the addictive potential of phenothiazines tended to limit their use in ambulatory patients. The pharmaceutical companies were actively looking for new substitutes to continue their share in this profitable market.

In 1963 *Valium* was introduced as a more potent tranquilizer. The third benzodiazepine, *Serax*, was introduced in June 1965.<sup>(1)</sup>

### The Use

Since their introduction, benzodiazepines became the most commonly prescribed group of psychotropic drugs.

However one should be reminded that in fact the labeled uses of benzodiazepines are confined to alcohol withdrawal psychosis, anxiety, insomnia and muscle spasm.

Common unlabeled uses include atonic seizures, atypical absence seizures, infantile spasms, myoclonic epilepsy adjunct treatment, neonatal abstinence syndrome, night terrors, opioid withdrawal symptoms, panic disorder, sedation in pediatric patients, tension headache and tremors.<sup>(2)</sup>

### The Misuse

The recognition of the development of drug dependency, withdrawal symptoms and thus abuse potential of benzodiazepines has raised much concern after the exponential increase of their uses in the 1970s.

The Hong Kong Medical Association is dedicated to providing a coordinated CME programme for all members of the medical profession. Under the HKMA CME Programme, a CME register is installed to document the CME efforts of doctors and special CME avenues are provided. The Association strives to foster a vibrant environment of CME throughout the medical profession. Both members as well as non-members of the Association are welcome to join us. You may contact the HKMA Secretariat for details of the programme. 香港醫學會致力推動持續醫學進修，醫學會體察到業界有必要設立完善的持續進修計劃，為同僚建立有系統的進修記錄機制，以及為全科醫生提供適切的進修課程。藉著這個計劃，我們期望將優良的進修傳統推展至醫學界中每一角落，同時為業界締造一個充滿活力的進修文化。我們誠意邀請你參與醫學會持續進修計劃，不論你是否醫學會的會員，均歡迎你同來與我們一同學習，以及享用醫學會為所有醫生設立的進修記錄機制。如欲了解香港醫學會持續醫學進修計劃的詳情，請聯絡本會秘書處查詢。

## Doctors, Please Have a CIDER Before You Prescribe Benzodiazepines to Your Patients.

Use for as short as 2 weeks had been reported to cause dependence.

Withdrawal syndrome can be very difficult to deal with especially for patients predisposing to chemical dependence. However, paradoxically, many of them are in fact the target group of patients for the prescription of benzodiazepines.

It is quite common for any articles concerning benzodiazepines in journals or magazines to be flooded with response letters from “angry patients” who claimed to have suffered from benzodiazepine dependence and withdrawal syndrome.

I think many doctors would also have the experience of encountering patients telling you that they have been taking some benzodiazepines daily for over 20 years. They are quite satisfied with the fact, living with the drug, and resist any suggestion of tailing off them.

To combat these problems, many regulations and guidelines have been developed by various authorities to regulate and to guide the use of benzodiazepines by doctors.

There has been a recent increase in the public’s awareness of mood disorders, anxiety disorders and problems of insomnia. Patients tend to be more ready to seek help for these problems from the general practitioners and their family physicians. This might result in an increase in the use of benzodiazepines. It is time to review some of these guidelines, among which the “Revised Guidelines on the Proper Prescription and Dispensing of Dangerous Drugs by Registered Medical Practitioners” promulgated by the Medical Council of Hong Kong will concern us the most.

### The Precautions

#### General

To use benzodiazepines only when indicated, in the lowest dose, for the shortest duration possible.

#### Abuse Potential and Risk of Dependence

The abuse potential and risk of development of drug dependence of a particular benzodiazepine is inversely related to its half-life and directly related to the duration of continuous use.

Benzodiazepines with short half lives will be of higher risks of being abused and drug dependence. Hence they should be prescribed with care (or to be avoided) especially for the at risk groups.

**Benzodiazepines with short half life (<6 hrs):** Midazolam (Mayne) and Triazolam (Halcion);

**Benzodiazepines with intermediate half life (around 12 hrs):** Alprazolam (Xanax), Loramet, Lorazepam (Ativan), Bromazepam (Lexotan) and Temazepam;

**Benzodiazepines with long half life:** Clonazepam (Rivotril), Estazolam, Flunitrazepam (Rohypnol), Chlordiazepoxide (Bralix), Diazepam (Valium), Flurazepam, Nitrazepam (Mogadon) and Pinazepam (Domar).

To use benzodiazepines intermittently or on a p.r.n. basis instead of continuous use can also help to lower the risk of developing dependence.

#### Treatment of Anxiety

Benzodiazepines are indicated for the short-term relief (two to four weeks only) of anxiety that is severe, disabling or subjecting the individual to unacceptable distress, occurring alone or in association with insomnia or short-term psychosomatic, organic or psychotic illness.

The use of benzodiazepines to treat short-term “mild” anxiety is inappropriate and unsuitable.<sup>(3)</sup>

#### Treatment of Insomnia

Benzodiazepines should be used to treat insomnia only when it is severe, disabling, or subjecting the individual to extreme distress.

#### Treatment of Panic Disorders

With panic disorders (with or without agoraphobia) resistant to antidepressant therapy, a benzodiazepine (lorazepam 3-5 mg daily or clonazepam 1-2 mg daily [both unlicensed]) may be used.

#### Treatment of Depression

Benzodiazepines should not be used as the sole agent in the treatment of depression.

A benzodiazepine may be used as short-term adjunctive therapy at the start of antidepressant treatment to prevent the initial worsening of symptoms.<sup>(4)</sup>

### The Regulations

In Hong Kong the prescription and supply of benzodiazepines by doctors is mainly governed by the Dangerous Drugs Regulations (Cap. 134) and the Professional Code and Conduct. Regulations 5 and 6 of the Dangerous Drugs Regulations (Cap. 134) criminally sanction for any failure to keep proper records and requirements as to registers of dangerous drugs supplied. They have received much attention and most doctors should be familiar with, or at least be aware of, them after the repeated conviction of doctors in breach of the Regulations and the report of such cases in the HKMA Newsletter.

While breaching the Dangerous Drugs Regulations would result in criminal consequences, a breach of the Professional Code and Conduct would result in disciplinary action. Part III Section 11 of the Code concerns with the "Supply of dangerous or scheduled drugs". Subsection 11.1 states that: *"Medical practitioners are advised to acquaint themselves with the Guidelines on the Proper Prescription and Dispensing of Dangerous Drugs promulgated by the Medical Council. Disciplinary proceedings may be taken in any case in which a medical practitioner prescribes or supplies drugs of addiction or dependence otherwise than in the course of bona fide and proper treatment."*

The "Revised Guidelines on the Proper Prescription and Dispensing of Dangerous Drugs by Registered Medical Practitioners" was promulgated by the Medical Council of Hong Kong in October 2003.

Section (A), (2) and (3) state that: *"These guidelines reflect currently accepted professional standards on the use of such agents in the local context, and are intended to provide general guidance to medical practitioners for the promotion of good clinical practice."*

*The Practice Directions under Section (E) should be followed. Breach of these directions may be construed as improper use of dangerous drugs."*

Section (E), (1) concerns with the "Practice Directions for use of benzodiazepines."

Since the test for professional misconduct is "a fall short of accepted professional standards", and the Guidelines reflect the currently accepted professional standards on the use of such agents in the local context; failure to follow the guidelines would highly likely to result in a successful conviction of professional misconduct.<sup>(5)</sup>

### The CIDER

It is important for doctors to pay attention to these guidelines and to be familiar with them so as not to get caught by them.

I have designed a small trick to remember them (for those concerning benzodiazepines only):

The word **CIDER** is used to remember the essential points of the guideline:

- C** – Complete history, physical examination, investigation and diagnosis.
- I** – Inform your patients about your diagnosis, plan of management, duration of treatment, other treatment alternatives, and the side effects and abuse potential of the medication.
- D** – Document your findings, plan of management and most important, the justification of prescribing benzodiazepines to this particular patient.
- E** – Evaluate the patient's abuse potential (e.g. History of substance abuse, alcoholic), judge it against the therapeutic benefits, and document it in your notes.
- R** – Reassess the need for continual treatment regularly, (monthly, as recommended) and tail off whenever possible. (Remember to document this).
- Refer** the patient to specialist care when necessary.

So, doctors, please have a **CIDER** before prescribing benzodiazepines to your patients!

### The Origins of Cider

It's almost impossible to pinpoint the origins of cider. The existence of apples is easier to establish, but when it comes to actual cider making, documentary evidence remains frustratingly patchy.

Most cider is made from fermented apple juice. Natural cider has nothing added and relies, for fermentation, upon the wild yeast present in the apples. For mass-produced ciders, a yeast culture is added in order to achieve consistency. Although much of today's cider is produced from apple concentrate, many traditional cider-makers use only cider apples, cultivated specifically for the purpose.<sup>(6)</sup>

### Reference

1. Dilip Ramchandani. The Librium Story. History Notes, Psychiatric News.
2. First Databank.
3. Advice form Committee on Safety of Medicines.
4. BNF.
5. The "Revised Guidelines on the Proper Prescription and Dispensing of Dangerous Drugs by Registered Medical Practitioners".
6. History-of-cider.com.

### Self-Assessment Questions

(Please indicate true or false to the following statements.)

1. Valium was the first introduced benzodiazepine.
2. One of the labeled use of benzodiazepines is for treatment of anxiety.
3. The use of benzodiazepines to treat short-term "mild" anxiety is inappropriate and unsuitable.
4. Benzodiazepines are the drug of choice in treatment of depression.

5. Failure to follow the "Revised Guidelines on the Proper Prescription and Dispensing of Dangerous Drugs by Registered Medical Practitioners" may be construed as improper use of dangerous drugs, and thus professional misconduct.
6. Cider is a drink made from fermented apple juice.
7. The word "CIDER" is used by the author to help remembering essential points in the "Revised Guidelines on the Proper Prescription and Dispensing of Dangerous Drugs by Registered Medical Practitioners".
8. It is very important to inform your patients about your diagnosis, plan of management, duration of treatment, other treatment alternatives, and the side effects and abuse potential of the medication.
9. Referral is always necessary when a patient requires benzodiazepines.

**ANSWERS TO APRIL 2004 ISSUE**  
**香港醫學會持續醫學進修計劃**  
**每月自修資料二零零四年四月號答案**

**An Update on Empyema Thoracis**

1.	T
2.	F
3.	T
4.	T
5.	F
6.	T
7.	F
8.	F
9.	T
10.	T

### CME Event 講課簡介


### Venue & Time 地點及時間

**9 June 2004 (Wednesday)**

#### Medical Therapy of Prostatic Symptoms

**Assoc. Prof. Tam Po Chor**

M.B., B.S., F.R.C.S.Ed. (Surgery-in-General), F.R.A.C.S., F.C.S.H.K.,  
F.R.C.S.Ed. (Urol.), F.H.K.A.M. (Surgery)  
Consultant & Chief, Division of Urology, Department of Surgery,  
University of Hong Kong Medical Centre, Queen Mary Hospital  
Associate Professor, Department of Surgery, The University of Hong Kong

The luncheon is sponsored by Pfizer Corporation Hong Kong Ltd. 

The Ballroom, Level 2  
Langham Hotel Hong Kong  
(Former Great Eagle Hotel)  
8 Peking Road, TST  
Lunch: 1:00 - 2:00 p.m.  
Lecture: 2:00 - 3:00 p.m.

九龍尖沙咀北京道八號  
朗廷酒店(前鷹君酒店)二樓宴會廳  
午餐: 下午一時至二時正  
講課: 下午二時至三時正

**17 June 2004 (Thursday)**

#### HKMA Structured CME Programme with HKS&H – Update on Treatment of Liver Cancer

**Dr. Leung Wai Tong, Thomas**

Honorary Consultant, Medical Oncology, Oncology Centre, HKS&H

This symposium is co-organized with Hong Kong Sanatorium & Hospital. 

The HKMA Dr. Li Shu Pui Professional  
Education Centre  
2/F, Chinese Club Building  
21-22 Connaught Road Central, HK  
Lecture: 2:00 - 3:00 p.m.  
(Light lunch: 1:15 p.m.)

香港中環干諾道中二十一至二十二號  
華商會所大廈二樓  
香港醫學會李樹培醫生專業教育中心  
講課: 下午二時至三時正  
[茶點於下午一時十五分開始]

**Registration:** Please fill in and return the Registration Form together with a cheque of adequate amount made payable to "The Hong Kong Medical Association" to 5/F Duke of Windsor Social Service Building, 15 Hennessy Road, Hong Kong. Each lecture will carry 1 CME point under the MCHK/HKMA CME Programme. Accreditation from other colleges is pending.

**報名方法:** 請填妥表格連同支票寄交香港灣仔軒尼詩道十五號溫莎公爵社會服務大廈五樓, 支票抬頭請書明支付「香港醫學會」。參加者可獲醫務委員會/香港醫學會持續醫學進修計劃積分一分。其他專科學院之學分尚在申請中。

Please register for participation. First come, first served. 名額有限 請早登記

I would like to register for the following CME lecture(s):

本人欲報名參加以下講課:

Please "✓" as appropriate. 請在適用處加上「✓」號

#### Luncheon CME Lecture

9 June 2004 : Medical Therapy of Prostatic Symptoms

#### Structured CME with HKS&H

17 June 2004 : Update on Treatment of Liver Cancer

	HKMA Member HK\$50	CME Participants HK\$50
9 June 2004 : Medical Therapy of Prostatic Symptoms	<input type="checkbox"/>	<input type="checkbox"/>
17 June 2004 : Update on Treatment of Liver Cancer	<input type="checkbox"/>	<input type="checkbox"/>

I enclose herewith a cheque of

現隨表格附上支票一張作為講課之報名費用: HK\$港幣 \_\_\_\_\_

Name 姓名: \_\_\_\_\_ Tel No. 電話: \_\_\_\_\_ Fax No. 傳真: \_\_\_\_\_

HKMA Membership No. 會員編號

or HKMA CME No. 或進修號碼: \_\_\_\_\_ Signature 簽名: \_\_\_\_\_

Data collected will be used and processed for the purposes related to the MCHK/HKMA CME Programme only. All registration fees are not refundable or transferable. 個人資料將用於有關香港醫學會持續醫學進修計劃之事宜。所有報名費用將不給予退還或轉授予其他會員。

# Clinical Case Study

## 專科個案剖析

Please answer the questions for each quiz below by returning the completed answer sheet printed on page 11. This exercise will attract 0.5 CME point for participants completing BOTH quizzes. Answers and explanations will be provided in the next issue.

請回答下列問題並填妥第十一頁之答題紙交回本會秘書處，參加者將可獲持續醫學進修積分點零點五分，請注意，參加者必須同時回答兩個小測驗之問題。至於今期之答案將刊於下一期《持續醫學進修專訊》之中。

### >> Clinical Cardiology Series 臨床心臟科個案研究

Issues on peri-operative evaluation of patients with cardiac risks for non-cardiac surgery

Please state true or false to the following issues and explain.

1. *Left bundle branch block on a resting 12 leads ECG is a cardiac risk factor.*
2. *Non-invasive cardiac stress test is indicated pre-operatively in diabetic patients.*
3. *Non-invasive cardiac stress test is indicated pre-operatively in patients with pathological Q waves on ECG.*
4. *Beta-blocker therapy is an acceptable alternative to pre-operative non-invasive cardiac stress testing.*
5. *Chronic renal insufficiency is a cardiac risk factor for surgery.*

The content of the Clinical Cardiology Series is provided by:

#### Dr. Li Siu Lung, Steven

M.B., B.S.(H.K.), M.R.C.P.(U.K.), F.H.K.A.M., F.H.K.C.P., F.R.C.P.(Glasg.), F.R.C.P. (Edin.), Specialist in Cardiology

#### Dr. Wong Shou Pang, Alexander

F.R.C.P., F.H.K.A.M.(Med.), F.H.K.C.P., Specialist in Cardiology

臨床心臟科個案研究之內容誠蒙李少隆醫生及王壽鵬醫生提供。

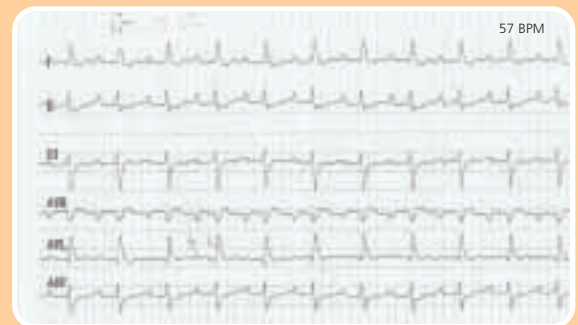
### 2. *What has been done to this patient that caused the ECG(2) changes below?*

- a coronary revascularization
- b biventricular pacemaker implantation
- c radiofrequency ablation
- d anti-arrhythmic drug therapy

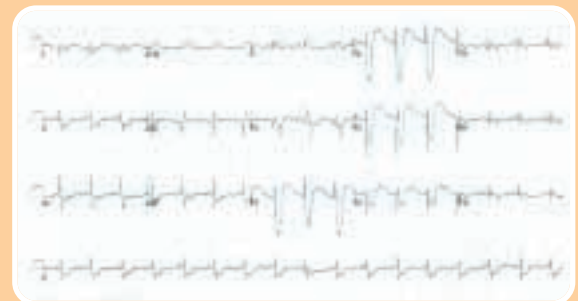
It showed that the first-degree heart block was resolved and the QRS duration was normalized. These were the results of the implantation of a biventricular pacemaker. The ECG now showed spontaneous P waves with synchronous biventricular pacing. In the chest leads, there were fusion of QRS complexes of LV and RV pacing. During implantation of biventricular pacemakers, the RA and RV leads are inserted as usual ways. The third LV lead is implanted through the coronary sinus to the cardiac vein over the LV wall.

Clinical trials including the MUSTIC and MIRACLE studies showed improvement of quality of life and performance in 6-minute walk, NYHA functional class and oxygen consumption after biventricular pacing. The COMPANION trial showed that with class III and IV heart failure, biventricular pacing plus automatic implantable cardioverter-defibrillator therapy reduced mortality over medical therapy.

Other trials such as the CARE-HF study are in progress to assess the morbidity and mortality of biventricular pacing compared to medical therapy.



ECG(1)



ECG(2)

### >> Answers to April 2004 Clinical Cardiology Series 臨床心臟科個案研究 二零零四年四月份答案

Ms Chan was admitted because of congestive heart failure. Her blood pressure was around 80/40 mmHg. Her echocardiogram showed a left ventricular ejection fraction of 20% and dilated LV and RV chambers. Her ECG was shown below:

#### 1. *Would you comment on ECG(1)?*

The ECG showed first-degree heart block and widened QRS complexes >120 ms. These were related to her dilated cardiomyopathy. Ms Chan was actually in functional class IV status for her heart failure. She has asynchronous contractions between her right and left ventricles.

## ➤➤ Dermatology Series 皮膚科病例研究

A 45 year old male presented with change in colour of his toenail for six months. There was no other symptom. His past health was good. Physical examination revealed whitish discoloration over his left big toe nail. There were also plantar and toe-web scales.

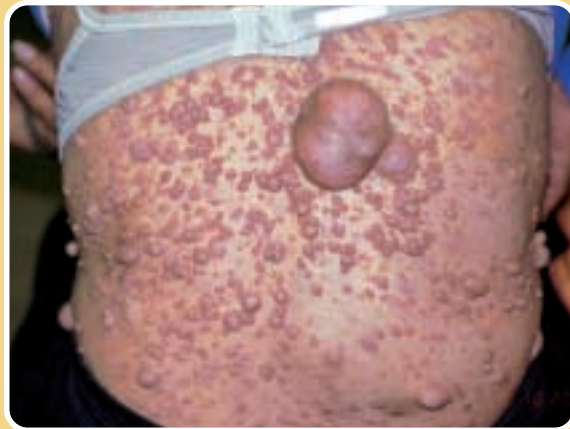
1. *What are the clinical diagnosis and differential diagnoses?*
2. *What are the different subtypes of this condition?*
3. *What are the investigations?*
4. *What are the usual causative agents?*
5. *What are the treatments?*



The content of the Dermatology Series is provided by:  
**Dr. Chan Loi Yuen** and **Dr. Tang Yuk Ming, William**  
Specialists in Dermatology & Venereology  
皮膚科病例研究之內容誠蒙陳來源醫生及鄧旭明醫生提供。

## ➤➤ Answers to April 2004 Dermatology Series 皮膚科病例研究 二零零四年四月份答案

A 30 year old lady presented with multiple asymptomatic skin nodules over her trunk and limbs for more than 20 years. The number of lesions increased progressively. There were also pigmented patches over her body since childhood. Her past health and family history was unremarkable. Physical examination revealed multiple soft, flesh-coloured nodules measuring 1-8 centimeters in size. Pigmented patches were also noted on her abdomen and limbs. Freckles were seen over her axilla. Slit lamp examination of both eyes was unremarkable.



### 1. *What is the clinical diagnosis?*

The diagnosis is neurofibromatosis type 1 (NF-1), also known as von Recklinghausen's disease. This is one of the commonest autosomal dominant diseases in humans. The incidence is about 1:3000. However, between 30 and 50 percent of new cases are due to mutation. The gene for NF-1 has been localized to chromosome 17.

### 2. *What are the other clinical features of this condition?*

The diagnosis of NF-1 can be made if two or more of the following criteria are present: six or more café-au-lait macules of > 5mm in greatest diameter in prepubertal children and > 15 mm diameter in postpubertal individuals; two or more neurofibromas of any type or one plexiform neurofibroma; freckling in axillary or inguinal areas; two or more Lisch nodules; optic glioma; distinctive osseous lesion; and first degree relative with NF-1.

### 3. *What are the investigations?*

The diagnosis can usually be made on clinical ground. Investigations including slit lamp examination, CT brain, EEG and skeletal survey may be required. Excisional skin biopsy should be done for suspected malignant cutaneous lesion.

### 4. *What are the possible complications?*

Hypertension may be present. There may also be neurological complications such as intracranial tumour, epilepsy or intellectual impairment. Skeletal abnormalities may include kyphoscoliosis, macrocephaly, short stature and pseudoarthroses of tibia or fibulae. There may also be endocrinopathy and increased risk of malignancy such as pheochromocytoma, leukemia, Wilm's tumour. Cutaneous neurofibroma may undergo malignant change.

### 5. *What is the treatment?*

The patients should be followed up regularly for early detection of complication. Cutaneous tumours should be excised if they are symptomatic or suspicious. Family members should be screened for NF-1 and genetic counselling offered to the proband and the affected family if needed.



The Hong Kong Medical Association



Kwong Wah Hospital



醫院管理局  
HOSPITAL  
AUTHORITY

Lecture	Date	Topic
II	30 May 2004	<b>Respiratory Medicine</b> 1. Update in Management of Pulmonary TB Dr. Chan Yuk Choi <i>Consultant Chest Physician, TB &amp; Chest Unit, WTSH</i> 2. COPD: Pitfalls in Diagnosis and Management Dr. Yee Kwok Sang <i>SMO, Dept of M&amp;G, KWH</i>
III	27 Jun 2004	<b>Gastroenterology &amp; Hepatology</b> 1. Malabsorption Syndrome Dr. Fung Tang Tat <i>Specialist in Gastroenterology, Dept of M&amp;G, KWH</i> 2. Management of Obstructive Jaundice Dr. Yeung Yuk Pang <i>Associate Consultant, Dept of Surgery, KWH</i>
IV	25 Jul 2004	Cardiology
V	22 Aug 2004	Rheumatology & Rehabilitation
VI	26 Sept 2004	Endocrinology and DM
VII	24 Oct 2004	Renal Medicine
VIII	28 Nov 2004	Stroke and Geriatrics
IX	19 Dec 2004	Psychiatry
X	23 Jan 2005	Paediatrics
XI	27 Feb 2005	Traditional Chinese Medicine
XII	27 Mar 2005	General Surgery & Orthopaedics

- **Venue** : Lecture Theatre, 10/F, Yu Chun Keung Memorial Medical Centre, KWH
- **Date** : April 2004 to March 2005
- **Time** : 2:00 – 5:00 pm
- **Fee** : HK\$50 per lecture for HKMA members  
HK\$80 per lecture for CME Participants
- **地點** : 廣華醫院余振強紀念中心十樓演講廳
- **日期** : 二零零四年四月至二零零五年三月
- **時間** : 下午二時至五時正
- **報名費用** : 醫學會會員－每課堂港幣五十元正  
持續進修參加者－每課堂港幣八十元正

Light snacks and lecture notes will be provided.

敬備茶點及講義

Registration: Please fill in and return the Registration Form on p.9 together with a cheque of adequate amount made payable to "The Hong Kong Medical Association" to 5/F Duke of Windsor Social Service Building, 15 Hennessy Road, Hong Kong. Each lecture will carry 3 CME points under the **MCHK/HKMA CME Programme**.

報名方法：請填妥第九頁之表格連同支票寄交香港灣仔軒尼詩道十五號溫莎公爵社會服務大廈五樓，支票抬頭請書明支付「香港醫學會」。參加者可獲醫務委員會／香港醫學會持續醫學進修計劃積分三分。



The Hong Kong Medical Association



Queen Elizabeth Hospital

Lecture	Date	Topic
III	13 June 2004	<b>Surgery</b> 1. <b>The Spectrum of Minimal Access Surgery</b> <b>Dr. Chick Wai Keung</b> <i>Specialist, Department of Surgery</i> 2. <b>Common Urological Problems</b> <b>Dr. Chu Sau Kwan</b> <i>SMO, Department of Surgery</i> 3. <b>Paed-Surgery Update</b> <b>Dr. Leung Wai Yip, Michael</b> <i>SMO, Department of Surgery</i>
IV	11 July 2004	<b>ENT</b> <b>Diseases of Ear, Nose and Throat</b> <b>Dr. Lai Hin Wang</b> <i>Consultant, Department of ENT</i> <b>Dr. Chong Hou Ming</b> <i>MO, Department of ENT</i>
V	8 Aug 2004	Obstetrics & Gynaecology & X-Ray
VI	12 Sep 2004	Orthopaedics

- **Venue** : Lecture Theatre, G/F, Block M, QEH
- **Date** : April 2004 to March 2005
- **Time** : 2:00 – 5:00 pm
- **Fee** : HK\$50 per lecture for HKMA members  
HK\$80 per lecture for CME Participants

- **地點** : 伊利沙伯醫院M座地下演講廳
- **日期** : 二零零四年四月至二零零五年三月
- **時間** : 下午二時至五時正
- **報名費用** : 醫學會會員 – 每課堂港幣五十元正  
持續進修參加者 – 每課堂港幣八十元正

Light snacks and lecture notes will be provided. 敬備茶點及講義

First come, first served. 名額有限 請早登記

## HKMA Structured CME Programme at QEH/KWH – Registration Form 香港醫學會分科進修課程報名表格

I would like to register for the following lecture(s):

本人欲報名參加以下講課：

		HKMA Member HK\$50	CME Participants HK\$80
KWH	30 May 2004:	Respiratory Medicine	<input type="checkbox"/>
	27 Jun 2004:	Gastroenterology & Hepatology	<input type="checkbox"/>
QEH	13 June 2004:	Surgery	<input type="checkbox"/>
	11 July 2004:	ENT	<input type="checkbox"/>

Please "✓" as appropriate 請在適用處加上「✓」號

I enclose herewith a cheque of  
現隨表格附上支票一張作為講課之報名費用：HK\$港幣\_\_\_\_\_

Name 姓名: \_\_\_\_\_ Tel No. 電話: \_\_\_\_\_ Fax No. 傳真: \_\_\_\_\_

HKMA Membership No. 會員編號  
or HKMA CME No. 或進修號碼: \_\_\_\_\_ Signature 簽名: \_\_\_\_\_

Data collected will be used and processed for the purposes related to the MCHK/HKMA CME Programme only. All registration fees are not refundable or transferable. 個人資料將用於有關香港醫學會持續醫學進修計劃之事宜。所有報名費用將不給予發還或轉授予其他會員。

# THE SOCIETY OF PHYSICIANS OF HONG KONG

Scientific Meeting June 5, 2004 (Saturday)

## Strategies for Preventing Stroke in Hypertensive Patients – Lessons from LIFE

**Speaker : Eigil Fossum, M.D. PhD**

Clinical Hypertension Specialist, European Society of Hypertension  
Fellow in Cardiology, Department of Cardiology, Ullevaal University Hospital  
Board member of the Norwegian Society of Hypertension

**Chairman : Dr. Lam Tat Chung, Paul (林達聰醫生)**

President, The Society of Physicians of Hong Kong  
FRCP, FHKAM(Medicine), FHKAM(Psychiatry)

Place : The Auditorium, 4/F., Li Shu Pui Block  
Hong Kong Sanatorium & Hospital

Time : 7:00 pm Cocktail 7:30–8:30 pm Lecture  
8:30 pm Buffet Dinner

Sponsor : Merck Sharp & Dohme (Asia) Ltd.

CME Points : Under application

Enquiry : Ms. Becky Chiu Tel. 2526 2626

Open to doctors free of charge. On first-come first-serve basis.

Registration by phone: **2835 9820** or by Fax: **2834 0756** (Attn.: Ms. Vicky Tam)

Name of Doctor: \_\_\_\_\_ Tel.: \_\_\_\_\_

# THE SOCIETY OF PHYSICIANS OF HONG KONG

CME Lecture June 11, 2004 (Friday)

## Management of Overactive Bladder

**Speaker : Dr. Que Bon We, Manuel (郭文偉醫生)**

MBBS(HK), FHKAM(Surgery), FRCS(Edin), FCSHK  
Specialist in Urology & Senior Medical Officer  
Department of Surgery, UCH

**Chairman : Dr. Lam Tat Chung, Paul (林達聰醫生)**

President, The Society of Physicians of Hong Kong  
FRCP, FHKAM(Medicine), FHKAM(Psychiatry)

Place : HKMA Dr. Li Shu Pui Professional Education Centre

Time : 1:30 pm Light Lunch  
2:00-3:00 pm Lecture

Sponsor : Pfizer Corporation Hong Kong Limited

CME Points : Under application

Enquiry : Ms. Becky Chiu  
Tel. 2526 2626

Open to doctors free of charge.

On first-come first-serve basis.

To register, please fax this advertisement  
to **2579 0599**

Space for Name Card (in English)

# Answer Sheet for May 2004

## 二零零四年五月號答題紙

Please return completed answer sheet to the HKMA Secretariat on or before 15 June 2004 for documentation. 1 CME point will be awarded for answering the Monthly Self-Study Series (I) and an extra 0.5 CME point for completing the Clinical Case Study (II). (Fax: 2865 0943)

請回答所有問題，並於二零零四年六月十五日前將答題紙傳真或寄回至香港醫學會。參加者將可獲持續醫學進修積分點—每月自修系列：一分；「專科個案剖析」系列：零點五分。(傳真號碼: 2865 0943)

### (I) Doctors, Please Have a CIDER Before You Prescribe Benzodiazepines to Your Patients.

(Please indicate "T" or "F" in each box.)

1	
2	
3	
4	
5	
6	
7	
8	
9	

姓名  
Name: \_\_\_\_\_

香港醫學會會員編號  
或持續進修編號  
HKMA Membership No.  
or HKMA CME No.: \_\_\_\_\_

香港身份證號碼       X X ( X )  
HKID No.: \_\_\_\_\_

簽名  
Signature: \_\_\_\_\_

聯絡電話  
Contact Tel. No.: \_\_\_\_\_

### (II) Clinical Case Study

(Please answer both quizzes and write down the answers in the space provided.)

#### (A) Clinical Cardiology Series

- \_\_\_\_\_
- \_\_\_\_\_
- \_\_\_\_\_
- \_\_\_\_\_
- \_\_\_\_\_

#### (B) Dermatology Series

- \_\_\_\_\_
- \_\_\_\_\_
- \_\_\_\_\_
- \_\_\_\_\_
- \_\_\_\_\_

# CME Calendar

## 持續進修日程

Date/Time 日期/時間	Function 活動	CME Accreditation 進修積分											Remarks/ Contact Info 備註及聯絡電話				
		MCHK & HKMA	HKCA	HKCCM	HKCEM	HKCFP	HKCOG	COHK	HKCOS	HKCORL	HKCPaed	HKCPath		HKCP	HKCPsy	HKCR	CSHK
May 2004	<b>HKMA CME Programme</b> Monthly Self-Study Series – Doctors, Please Have A CIDER before You Prescribe Benzodiazepines To Your Patients																Fax answer sheet to Fax: 2865 0943 By 15 June 2004 Tel: 2388 2728
16 May 2004 (Sun) 1:00 – 4:00 pm	<b>Hong Kong Doctors Union</b> The 53rd HKDU Sunday Afternoon Symposium <i>Lecture Hall, 8/F, Block G, Princess Margaret Hospital, Kwai Chung, NT</i>	1.5															
16 May 2004 (Sun) 2:00 – 7:00 pm	<b>CUHK – Department of Medicine &amp; Therapeutics</b> Certificate Course in Diabetes Management and Education Year 2004 (Module 2: Diabetes Self Management) <i>Multi-Function Room, 1/F, Postgraduate Education Centre, Prince of Wales Hospital, Shatin NT</i>	5		5		3	5				3	5			5	5	Ms Charmaine Lee Tel: 2632 5752 Fee: \$400
16 May 2004 (Sun) 2:00 – 7:00 pm	<b>CUHK – Department of Medicine &amp; Therapeutics</b> Professional Diploma Programme in Diabetes Management and Education Year 2004 (Module 2: Diabetes Self Management) <i>Multi-Function Room, 1/F, Postgraduate Education Centre, Prince of Wales Hospital, Shatin NT</i>	122#		10#		68.5#	5#				18#	20#			122#	18#	Ms Charmaine Lee Tel: 2632 5752
16 May 2004 (Sun) 2:45 – 6:00 pm	<b>Hong Kong Doctors Union</b> The 54th HKDU Sunday Afternoon Symposium <i>Lecture Hall, 8/F, Block G, Princess Margaret Hospital, Kwai Chung, NT</i>	2															Tel: 2388 2728
17 May 2004 (Mon) 5:30 – 6:30 pm	<b>Princess Margaret Hospital - Dept of O&amp;G, HKCOG</b> Topic Seminar <i>Room 10, 2/F, Block G, Princess Margaret Hospital, NT</i>	1															Ms. Ginny Chan Tel: 2990 3297
18 May 2004 (Tue) 2:00 – 3:00 pm	<b>HA – Tuen Mun Hospital</b> Seminar: Management of Post-menopausal Osteoporosis <i>Discussion Room (D1002), 1/F Main Block, Tuen Mun Hospital, NT</i>	1															Ms. Anita Au Yeung Tel: 2468 5777
19 May 2004 (Wed) 8:30 – 9:30 am	<b>Pamela Youde Nethersole Eastern Hospital - Dept of O&amp;G, HKCOG</b> Topic Seminar <i>Venue: TBA</i>	1															Ms. Angel Hui Tel: 2595 6408
19 May 2004 (Wed) 12:30 – 1:45 pm	<b>Our Lady of Maryknoll Hospital – Dept of Medicine &amp; Geriatrics</b> Wednesday Educational Meeting: Grand Round: Management of Infective Endocarditis <i>Training Room I, 1/F, OPD Block, Our Lady of Maryknoll Hospital, Kln</i>	1															Tel: 2354 2250
19 May 2004 (Wed) 1:00 – 2:00 pm	<b>Queen Elizabeth Hospital – Dept of O&amp;G, HKCOG</b> Topic Seminar <i>B3, Seminar Room, Queen Elizabeth Hospital, Kln</i>	1															Ms. Betty Cheng Tel: 2958 6049
19 May 2004 (Wed) 1:30 – 3:30 pm	<b>HKMA Tai Po Community Network</b> 「皮膚病難不了我證書研討會」(Day 4) <i>新界大埔安池路一號昌運中心一樓京都酒樓</i>	2				1.5					1		–				Ms Lo Tel: 2881 4242
19 May 2004 (Wed) 1:30 – 4:30 pm	<b>HKU Family Institute</b> Certificate Course in Family Therapy for Health Care Professionals (Session 8) <i>Lecture Hall, HKU Family Institute, 5/F Tsan Yuk Hospital, 30 Hospital Road, Sai Ying Pun, HK</i>	3				2											Tel: 2859 5300
19 May 2004 (Wed) 2:00 – 3:00 pm	<b>The Society of Physicians of Hong Kong</b> Current Management of Back Pain <i>HKMA Dr. Li Shu Pui Professional Education Centre, 2/F, Chinese Club Building, 21-22 Connaught Road Central, HK</i>	1															Tel: 2818 0180
19 May 2004 (Wed) 2:15 – 3:15 pm	<b>Hong Kong Doctors Union</b> Video Cassette Session – Contemporary Issues in HIV Disease <i>Room 901, Hang Shing Building, 363-373 Nathan Road, Kln</i>	1				1											Tel: 2388 2728
20 May 2004 (Thu) 12:30 – 1:30 pm	<b>Prince of Wales Hospital - Dept of O&amp;G, HKCOG</b> General Gynaecology Audit <i>Seminar Room 1E, Prince of Wales Hospital, NT</i>	1															Ms. Alice Lai Tel: 2632 2810
20 May 2004 (Thu) 1:00 – 3:30 pm	<b>Hong Kong Doctors Union</b> 145th Luncheon Meeting <i>Crystal Room, 2/F, YMCA International House, 23 Waterloo Road, Kln</i>	1															Tel: 2388 2728
20 May 2004 (Thu) 2:00 – 3:00 pm	<b>HKMA CME Programme, Hong Kong Sanatorium &amp; Hospital</b> HKMA Structured CME Programme with Hong Kong Sanatorium & Hospital – Acute Knee Injuries <i>HKMA Dr. Li Shu Pui Professional Education Centre, 2/F, Chinese Club Building, 21-22 Connaught Road Central, HK</i>	1	1	–	1	1	1	0.5	1	0.5	1	–	–	1	–	1	Members: \$50 Non-M: \$80 Tel: 2861 1979
21 May 2004 (Fri) 1:45 – 3:15 pm	<b>The Hong Kong Medical Association</b> 2nd Putonghua Certificate Course for Medical Practitioners (Session 15) <i>HKMA Dr. Li Shu Pui Professional Education Centre, 2/F, Chinese Club Building, 21-22 Connaught Road Central, HK</i>	1.5															Whole Course Fee: \$1,500 (15-session) Ms. Dora Ho Tel: 2527 8285 Tel: 2608 3388
21 May 2004 (Fri) 2:00 – 3:00 pm	<b>Union Hospital</b> Effective way to convince the public to adopt healthy behaviours: practical tips for primary care physicians <i>Seminar Room, 2/F Medical Centre, Union Hospital, Shatin, NT</i>	1															
21 – 22 May 2004 (Fri – Sat)	<b>Osteoporosis Society of Hong Kong</b> ISCD Certificate Course on Clinical Densitometry <i>HK Convention and Exhibition Centre, HK</i>	8#															Dr. Ip Tai Pang Tel: 2162 6254
22 May 2004 (Sat) 9:00 – 10:00 am	<b>Kwong Wah Hospital – Dept of O&amp;G, HKCOG</b> Journal Club (Obs) <i>Seminar Room, N10, Kwong Wah Hospital, Kln</i>	1															Dr. NC Poddar Tel: 2781 5056
22 May 2004 (Sat) 9:00 – 12:30 pm	<b>HKU – Faculty of Medicine</b> Refresher Course in Forensic Medicine (Session III) <i>Cheung Kung Hai Conference Centre, G/F Academic and Administration Block, Faculty of Medicine Building, 21 Sassoon Road, HKU, HK</i>	3															Ms. Cherry Lee Tel: 2855 4875
22 May 2004 (Sat) 9:30 – 5:30 pm	<b>CUHK – Dept of Social Work, Kwai Chung Hospital – Yaumatei Child &amp; Adolescent Psychiatric Centre</b> Integrated Training Course on Childhood & Adolescent Disorders (Day 3) <i>Lt4, Wong Foo Yuan Building, Chung Chi College, CUHK</i>	5					4				18#		–				Ms. Polly Hung Tel: 2609 8783
22 May 2004 (Sat) 1:00 – 4:45 pm	<b>HKMA CME Programme, Hong Kong Society of Nephrology</b> Workshop on Prevention of Renal Failure <i>Lecture Theatre, HA Building, 147B Argyle Street, Kln</i>	2	2.5	2	1	2	2	1	–	1	1	2	2	2	2.5		Free of Charge Tel: 2861 1979

\* Colleges accreditation pending  
# Total CME points for entire course

Date/Time 日期/時間	Function 活動	CME Accreditation 進修積分											Remarks/ Contact Info 備註及聯絡電話			
		MCHK & HKMA	HKCA	HKCCM	HKCEM	HKCFP	HKCOG	COHK	HKCOS	HKCORL	HKCPaed	HKCPath		HKCP	HKCPsy	HKCR
22 May 2004 (Sat) 2:00 – 4:00 pm	<b>Hong Kong Association of Gerontology – Hong Kong Institute of Gerontology</b> Certificate Course on Gerontology for Medical Practitioners (Session 4) 1/F, HKSR Lam Tin Complex, 7 Rehab Path, Lam Tin, Kln	2		10#	12#	12#									18#	Tel: 2558 1181 22 May 2004 (Sat)
22 May 2004 (Sat) 2:00 – 5:00 pm	<b>HKU – Centre on Behavioral Health</b> Workshop on Psychotherapy and Counseling in Action: Live Demonstration for Professional Training (Session 4) G/F, Pauline Chan Building, 10 Sasson Road, HKU, HK	3														Tel: 2589 0510
22 May 2004 (Sat) 2:30 – 4:30 pm	<b>The Hong Kong Society of Occupational and Environmental Medicine</b> Annual Scientific Meeting 2003-2004 Meeting Room, FMSHK, 4/F Duke of Windsor Social Service Building, Wanchai, HK	2														Fax: 2581 2049
22 – 23 May 2004 (Sat – Sun)	<b>Osteoporosis Society of Hong Kong</b> Osteoporosis Conference HK Convention and Exhibition Centre, HK	7.5#														Dr. Ip Tai Pang Tel: 2162 6254
23 May 2004 (Sun) 1:00 – 5:00 pm	<b>The Association of Licentiates of Medical Council of Hong Kong</b> Recent Advances in Vaccination for Children; Food Allergy and Food Intolerance in Children HA Building, M/F, 147B Argyle Street, Kln	3														Tel: 2327 2869
23 May 2004 (Sun) 1:30 – 4:30 pm	<b>CUHK – Dept of Medicine &amp; Therapeutics</b> CUHK Diploma Programme in Advanced Internal Medicine 2004-05 – Headache Plaza Conference Centre, 35/F Central Plaza, 18 Harbour Road, HK	3	15#	10#	20#	5#	1		2#	18#					18#	Ms. Isabella Fu Tel: 2632 3996
23 May 2004 (Sun) 5:00 – 8:00 pm	<b>CUHK – Dept of Medicine &amp; Therapeutics</b> CUHK Diploma Programme in Advanced Internal Medicine 2004-05 – Anxiety and depression Plaza Conference Centre, 35/F Central Plaza, 18 Harbour Road, HK	3	15#	10#	20#	5#	1		2#	18#					18#	Ms. Isabella Fu Tel: 2632 3996
24 May 2004 (Mon) 9:00 – 12:30 pm	<b>HKU – Sau Po Centre on Ageing</b> Workshops – Improving the Well-Being of Elderly People Using the Life Story Approach (Part 1) LG102, KK Leung Building, HKU, HK	3														Tel: 2241 5365
24 May 2004 (Mon) 2:00 – 5:30 pm	<b>HKU – Sau Po Centre on Ageing</b> Workshops – Improving the Well-Being of Elderly People Using the Life Story Approach (Part 2) LG102, KK Leung Building, HKU, HK	3														Tel: 2241 5365
24 May 2004 (Mon) 6:30 – 10:00 pm	<b>Hong Kong Adventist Hospital</b> Management of Andropause Salon 5 & 6, Level 3 Marriott Hotel, HK	1.5														Tel: 2835 0543
25 May 2004 (Tue) 1:30 – 3:00 pm	<b>HA – Caritas Medical Centre, Dept of Family Medicine, Hong Kong College of Family Physicians, Hong Kong Doctors Union</b> Lecture – Joint Medical Programme: The Role of Speech Therapist in Voice Therapy Staff Lounge, 1/F Wai Oi Block, Caritas Medical Centre, Kln	2														Ms. Helen Lo Tel: 3408 7921
25 May 2004 (Tue) 6:00 – 7:30 pm	<b>HA – Tseung Kwan O Hospital</b> Academic Activity for Private Practitioners: Common Breast Problems Auditorium, G/F, Tseung Kwan O Hospital, NT	2														Ms. Eunice Heath Tel: 2208 0751
25 May 2004 (Tue) 6:00 – 7:30 pm	<b>Hong Kong Society of Palliative Medicine</b> Palliative Medicine Doctors' Meeting Lecture Theatre, Block M, Queen Elizabeth Hospital, Kln	2														Ms. Creamy Cheung Tel: 2958 6261
25 May 2004 (Tue) 7:00 – 8:30 pm	<b>The Federation of Medical Societies of Hong Kong, The Hong Kong Thoracic Society, American College of Chest Physicians (HK and Macau Chapter)</b> Certificate Course on Respiratory Medicine – (Session 1) Reversible Airflow Obstruction: Asthma 4/F, Duke of Windsor Social Service Building, 15 Hennessy Road, Wanchai, HK	2														Tel: 2527 8898
27 May 2004 (Thu) 12:30 – 1:30 pm	<b>Prince of Wales Hospital - Dept of O&amp;G, HKCOG</b> Perinatal Meeting Seminar Room 1E, Prince of Wales Hospital, NT	1														Ms. Alice Lai Tel: 2632 2810
27 May 2004 (Thu) 2:00 – 3:00 pm	<b>HA – Kwong Wah Hospital – Dept of Paediatrics</b> Lecture – Update on Diabetes Mellitus Lecture Room, 1/F Nurses Quarter, Kwong Wah Hospital, Kln	1														Ms. Annie Young Tel: 2781 5055
27 – 28 May 2004 (Thu – Fri) 9:00 – 5:00 pm	<b>Hong Kong Polytechnic University – Faculty of Health and Social Sciences, Dept of Optometry and Radiology</b> International Vision Rehabilitation Symposium Senate Room, The Hong Kong Polytechnic University, Kln	10#														Ms. Linda Chan Tel: 2766 5076
28 May 2004 (Fri) 12:30 – 1:30 pm	<b>Tuen Mun Hospital – Dept of O&amp;G, HKCOG</b> What is the optimal cervical smear screening interval in preventing CA cervix Room F2029, 2/F Special Block, Tuen Mun Hospital, NT	1														Ms. Angela Cheung Tel: 2468 5404
28 May 2004 (Fri) 1:15 – 3:00 pm	<b>Tsuen Wan Adventist Hospital</b> Breast Cancer Longwall Hall / Auditorium, Tsuen Wan Adventist Hospital, 199 Tsuen King Circuit, Tsuen Wan, NT	1														Tel: 2276 7180
28 May 2004 (Fri) 2:15 – 3:15 pm	<b>GlaxoSmithKline Ltd</b> Current & New Treatments to Meeting CHB Management Challenge HKMA Dr. Li Shu Pui Professional Education Centre, 2/F, Chinese Club Building, 21-22 Connaught Road Central, HK	1			1	1	1		0.5						1	Ms. Candy Choi Tel: 3189 8580
28 May 2004 (Fri) 2:00 – 3:00 pm	<b>Union Hospital</b> Update in the New Trend of Lipid Lowering Therapy Seminar Room, 2/F, Medical Centre Union Hospital, 18 Fu Kin Street, Tai Wai, Shatin, NT	1				1										Tel: 2608 3388

\* Colleges accreditation pending  
# Total CME points for entire course

# CME Calendar 持續進修日程

Date/Time 日期/時間	Function 活動	CME Accreditation 進修積分													Remarks/ Contact Info 備註及聯絡電話		
		MCHK & HKMA	HKCA	HKCCM	HKCEM	HKCFP	HKCOG	COHK	HKCOS	HKCORL	HKCPaed	HKCPath	HKCP	HKCPsy		HKCR	CSHK
28 May 2004 (Fri) 7:00 – 8:00 pm	<b>HA – Princess Margaret Hospital, Cardiac Team Dept</b> Lecture for update the knowledge on Device Management for Cardiac Arrhythmias and Heart Failure Course – Cardiac Resynchronization Therapy for Heart Failure I <i>Hall, 8/F, Block G, Princess Margaret Hospital, NT</i>	1															Ms. Ceci Tsui Tel: 2990 3151
29 May 2004 (Sat) 8:30 – 5:30 pm	<b>Management Society for Healthcare Professionals</b> New Healthcare Management in the 21st Century <i>Kowloon Shangri-La Hotel, Kln</i>	5	—	6	3	4	5	—	2		5	—	4	4	5		Ms. Coty Chum Tel: 2861 2668
29 May 2004 (Sat) 9:00 – 10:00 am	<b>Kwong Wah Hospital – Dept of O&amp;G, HKCOG</b> Obs Audit <i>Seminar Room, N10, Kwong Wah Hospital, Kln</i>	1															Dr. NC Poddar Tel: 2781 5056
30 May 2004 (Sun) 2:00 – 5:00 pm	<b>HKMA CME Programme, Kwong Wah Hospital</b> HKMA Structured CME Programme at KWH (II) – Respiratory Medicine <i>Lecture Theatre, 10/F, Yu Chun Keung Memorial Medical Centre, Kwong Wah Hospital, Kln</i>	3	3	—	2	2	—	1.5			1.5	2	3	—	3		Members: \$50 Non-M: \$80 Tel: 2861 1979 *
31 May 2004 (Mon) 9:00 – 12:30 pm	<b>HKU – Sau Po Centre on Ageing</b> Workshops – Improving the Well-Being of Elderly People Using the Life Story Approach (Part 2) <i>LG102, KK Leung Building, HKU, HK</i>	3															Tel: 2241 5365
1 Jun 2004 (Tue) 7:00 – 8:30 pm	<b>The Federation of Medical Societies of Hong Kong, The Hong Kong Thoracic Society, American College of Chest Physicians (HK and Macau Chapter)</b> Certificate Course on Respiratory Medicine – (Session 2) Update on Diagnosis and Treatment of Lung Cancer <i>4/F, Duke of Windsor Social Service Building, 15 Hennessy Road, Wanchai, HK</i>	2															Tel: 2527 8898
1 Jun 2004 (Tue) 7:30 – 8:30 pm	<b>Sportsmed HK</b> The Athlete's Hip <i>715 Jardine House, Central, HK</i>	1															Tel: 2715 4577
2 Jun 2004 (Wed) 11:30 – 1:00 pm	<b>HA – Castle Peak Hospital</b> Seminar - Perinatal Mental Disorders <i>Lecture theatre, Block D, Castle Peak Hospital, NT</i>	2															Ms. Fion Ling Tel: 2456 7843
2 Jun 2004 (Wed) 12:30 – 1:45 pm	<b>Our Lady of Maryknoll Hospital – Dept of Medicine &amp; Geriatrics</b> Wednesday Educational Meeting: Grand Round: Case Presentation <i>Training Room I, 1/F, OPD Block, Our Lady of Maryknoll Hospital, Kln</i>	1															Tel: 2354 2250
2 Jun 2004 (Wed) 1:30 – 4:30 pm	<b>HKU Family Institute</b> Certificate Course in Family Therapy for Health Care Professionals (Session 9) <i>Lecture Hall, HKU Family Institute, 5/F Tsan Yuk Hospital, 30 Hospital Road, Sai Ying Pun, HK</i>	3				2											Tel: 2859 5300
3 Jun 2004 (Thu) 8:00 – 9:30 am	<b>Hong Kong Baptist Hospital</b> Self Expandable Metallic Stent for Malignant Obstruction of Left Colon <i>Nursing School Lecture Room, 2/F, ASHHC, Hong Kong Baptist Hospital, Kln</i>	1.5															Dr. L.T. Yung Tel: 2339 8888
3 Jun 2004 (Thu) 2:15 – 3:15 pm	<b>Hong Kong Doctors Union</b> Video Cassette Session – Advances in the Treatment of Heart Failure <i>Room 901, Hang Shing Building, 363-373 Nathan Road, Kln</i>	1				1											Tel: 2388 2728
3-4 Jun 2004 (Thu-Fri) 9:00 – 5:10 pm	<b>HKU – Faculty of Medicine</b> Head & Neck Course 2004 – Cutaneous Lesions and Soft Tissue Tumours <i>Underground Lecture Theatre, New Clinical Building, Queen Mary Hospital, HK</i>	10#															Tel: 2855 4885
5 Jun 2004 (Sat) 9:00 – 12:30 pm	<b>HKU – Faculty of Medicine</b> Refresher Course in Forensic Medicine (Session IV) <i>Cheung Kung Hai Conference Centre, G/F Academic and Administration Block, Faculty of Medicine Building, 21 Sassoon Road, HKU, HK</i>	3															Ms. Cherry Lee Tel: 2855 4875
5 Jun 2004 (Sat) 9:30 – 5:30 pm	<b>CUHK – Dept of Social Work, Kwai Chung Hospital – Yaumatei Child &amp; Adolescent Psychiatric Centre</b> Integrated Training Course on Childhood & Adolescent Disorders (Day 4) <i>Lt4, Wong Foo Yuan Building, Chung Chi College, CUHK</i>	5				4				18#		—					Ms. Polly Hung Tel: 2609 8783
5 Jun 2004 (Sat) 2:00 – 4:00 pm	<b>Hong Kong Association of Gerontology – Hong Kong Institute of Gerontology</b> Certificate Course on Gerontology for Medical Practitioners (Session 5) <i>1/F, HKSR Lam Tin Complex, 7 Rehab Path, Lam Tin, Kln</i>	2		10#	12#	12#						—	—		18#		Tel: 2558 1181
6 Jun 2004 (Sun) 1:00 – 4:00 pm	<b>CUHK – Dept of Medicine &amp; Therapeutics</b> CUHK Diploma Programme in Advanced Internal Medicine 2003-04 – Electrolyte Abnormalities <i>Kai Cheong Tong, G/F, Postgraduate Education Centre, Prince of Wales Hospital, Shatin, NT</i>	3		10#			5#	0.5		18#	10#					18#	Ms. Suzanne Shek Tel: 2632 3127
6 Jun 2004 (Sun) 4:30 – 7:30 pm	<b>CUHK – Dept of Medicine &amp; Therapeutics</b> CUHK Diploma Programme in Advanced Internal Medicine 2003-04 – End Stage Renal Failure <i>Kai Cheong Tong, G/F, Postgraduate Education Centre, Prince of Wales Hospital, Shatin, NT</i>	3		10#			5#	0.5		18#	10#					18#	Ms. Suzanne Shek Tel: 2632 3127
7 Jun 2004 (Mon) 3:00 – 4:00 pm	<b>HA – Our Lady of Maryknoll Hospital, Dept of Surgery</b> Topical Workshop – Recent Advice in Mx of Carcinoma of Prostate <i>Conference Room D, 1/F, OPD Block, Our Lady of Maryknoll Hospital, Kln</i>	1															Ms. Clara Tsang Tel: 2354 2440
8 Jun 2004 (Tue) 4:00 – 7:00 pm	<b>HKU – Centre on Behavioral Health</b> Workshop on Psychotherapy and Counseling in Action: Live Demonstration for Professional Training (Session 5) <i>G/F, Pauline Chan Building, 10 Sasson Road, HKU, HK</i>	3															Tel: 2589 0510
8 Jun 2004 (Tue) 7:00 – 8:30 pm	<b>The Federation of Medical Societies of Hong Kong, The Hong Kong Thoracic Society, American College of Chest Physicians (HK and Macau Chapter)</b> Certificate Course on Respiratory Medicine – (Session 3) COPD: From Acute to Rehabilitative Care <i>4/F, Duke of Windsor Social Service Building, 15 Hennessy Road, Wanchai, HK</i>	2															Tel: 2527 8898

\* Colleges accreditation pending  
# Total CME points for entire course

Date/Time 日期/時間	Function 活動	CME Accreditation 進修積分											Remarks/ Contact Info 備註及聯絡電話				
		MCHK & HKMA	HKCA	HKCCM	HKCEM	HKCFP	HKCOG	COHK	HKCOS	HKCORL	HKCPaed	HKCPATH		HKCP	HKCPsy	HKCR	CSHK
9 Jun 2004 (Wed) 1:00 – 3:00 pm	<b>HKMA CME Programme</b> Medical Therapy of Prostatic Symptoms <i>The Ballroom, Level 2, Langham Hotel Hong Kong (Former Great Eagle Hotel), 8 Peking Road, TST</i>	1														Member: \$50 Non-M: \$80 Tel: 2861 1979 *	
9 Jun 2004 (Wed) 1:30 – 3:30 pm	<b>Hong Kong Academy of Medicine</b> Approach towards Symptoms of Red Eyes, Painful Eyes and Blurred Eyes <i>Lecture Theatre, M Block, Queen Elizabeth Hospital, Kln</i>	2														Tel: 2871 8787	
9 Jun 2004 (Wed) 6:00 – 8:30 pm	<b>The Hong Kong Society of Dermatology &amp; Venereology</b> Clinico-pathological Meeting / Case Demonstration <i>YMT Dermatology Clinic – 12/F, Yaumatei Specialists Clinic Extension, 143 Battery Street, Kln</i>	3														Ms. Rebecca Leung Tel: 2116 4322	
11 Jun 2004 (Fri) 9:00 – 5:30 pm	<b>The Nethersole Institute of Continuing Holistic Health Education</b> Consultation on Holistic Health & Care: Spirituality, Religion and Holistic Health – to Breakthrough the Boundary Situation <i>HA Building, M/F, 147B Argyle Street, Kln</i>	5														Tel: 2689 3875	
12 Jun 2004 (Sat) 2:30 – 4:30 pm	<b>HKMA CME Programme, Our Lady of Maryknoll Hospital</b> Refresher Course for Health Care Providers 2003/2004 (X) – Common gastrointestinal complaints in infants and young children <i>Training Room II, 1/F, OPD Block, Our Lady of Maryknoll Hospital, Kln</i>	2	2	—	1	1	1	1	—	—	2	6#	—	—	—	2	Ms. Clara Tsang Tel: 2354 2440
13 Jun 2004 (Sun) 10:00 – 11:30 am	<b>St. Teresa's Hospital – Surgical Committee</b> Bile Duct Injuries <i>9/F, Conference Room, St. Teresa's Hospital, Kln</i>	2				1									1.5	Dr. Lawrence Chan Tel: 2780 2226	
13 Jun 2004 (Sun) 1:00 – 5:00 pm	<b>The Association of Licentiate of Medical Council of Hong Kong</b> Common Problem of Sport Medicine; Chronic Prostatitis <i>HA Building, M/F, 147B Argyle Street, Kln</i>	3															Tel: 2327 2869
13 Jun 2004 (Sun) 2:00 – 5:00 pm	<b>HKMA CME Programme, Queen Elizabeth Hospital</b> HKMA Structured CME Programme at QEH (III) – Surgery <i>Lecture Theatre, G/F, Block M, Queen Elizabeth Hospital, Kln</i>	3	3	—	2	2	—	1.5	—	1.5	2	1.5	—	3	—	3	Members: \$50 Non-M: \$80 Tel: 2861 1979
15 Jun 2004 (Tue) 7:00 – 8:30 pm	<b>The Federation of Medical Societies of Hong Kong, The Hong Kong Thoracic Society, American College of Chest Physicians (HK and Macau Chapter)</b> Certificate Course on Respiratory Medicine – (Session 4) From Community Acquired Pneumonia to Tuberculosis <i>4/F, Duke of Windsor Social Service Building, 15 Hennessy Road, Wanchai, HK</i>	2															Tel: 2527 8898
16 Jun 2004 (Wed) 9:00 - 1:00 pm	<b>HA – Tuen Mun Hospital</b> Basic Infection Control Training Course <i>D1002 (Discussion Room), 1/F Main Block, Tuen Mun Hospital, NT</i>	3															Ms. Anita Au Yeung Tel: 2468 5777
16 Jun 2004 (Wed) 12:30 - 1:45 pm	<b>Our Lady of Maryknoll Hospital - Dept of Medicine &amp; Geriatrics</b> Wednesday Educational Meeting: Grand Round: Pain Management in Advanced Cancer <i>Training Room I, 1/F, OPD Block, Our Lady of Maryknoll Hospital, Kln</i>	1															Tel: 2354 2250
16 Jun 2004 (Wed) 1:30 - 3:15 pm	<b>Hong Kong Academy of Medicine</b> The Use of Quinolones in Clinical Practice; The Acutely Injured Knee <i>Lecture Theatre, M Block, Queen Elizabeth Hospital, Kln</i>	2															Tel: 2871 8787
16 Jun 2004 (Wed) 1:30 - 4:30 pm	<b>HKU Family Institute</b> Certificate Course in Family Therapy for Health Care Professionals (Session 10) <i>Lecture Hall, HKU Family Institute, 5/F Tsan Yuk Hospital, 30 Hospital Road, Sai Ying Pun, HK</i>	3				2											Tel: 2859 5300
16 Jun 2004 (Wed) 2:15 - 3:15 pm	<b>Hong Kong Doctors Union</b> Video Cassette Session – Clinical Case Reviews: the Medical/Legal Aspects of Pain Management <i>Room 901, Hang Shing Building, 363-373 Nathan Road, Kln</i>	1															Tel: 2388 2728
17 Jun 2004 (Thu) 2:00 - 3:00 pm	<b>HKMA CME Programme, Hong Kong Sanatorium &amp; Hospital</b> HKMA Structured CME Programme with Hong Kong Sanatorium & Hospital – Update on Treatment of Liver Cancer <i>HKMA Dr. Li Shu Pui Professional Education Centre, 2/F, Chinese Club Building, 21-22 Connaught Road Central, HK</i>	1	1	—	0.5	1	1	0.5	—	0.5	—	1	1	1	—	1	Members: \$50 Non-M: \$80 Tel: 2861 1979
18 Jun 2004 (Fri) 2:00 - 3:00 pm	<b>Union Hospital</b> Arthroscopic Shoulder Surgery <i>Seminar Room, 2/F, Medical Centre Union Hospital, 18 Fu Kin Street, Tai Wai, Shatin, NT</i>	1					1										Tel: 2608 3388
19-20 Jun 2004 (Sat-Sun)	<b>CUHK - Faculty of Medicine, Dept of Medicine and Therapeutics</b> Advances in Medicine 2004 <i>Hong Kong Convention and Exhibition Centre, HK</i>	10	12				7		5		9			11	12	11	Ms. Lenora Yung Tel: 2871 8841
19 Jun 2004 (Sat) 9:30 - 5:30 pm	<b>CUHK – Dept of Social Work, Kwai Chung Hospital – Yaumatei Child &amp; Adolescent Psychiatric Centre</b> Integrated Training Course on Childhood & Adolescent Disorders (Day 5) <i>Lt4, Wong Foo Yuan Building, Chung Chi College, CUHK</i>	5					4				18#		—				Ms. Polly Hung Tel: 2609 8783
19 Jun 2004 (Sat) 10:30 - 5:00 pm	<b>World Cancer Research Fund Hong Kong</b> Cancer Prevention: Transition from Policy to Practice <i>JW Marriot Hotel, HK</i>	5		4								1					Mr. Spencer Tong Tel: 2529 5025

\* Colleges accreditation pending  
# Total CME points for entire course

Note: For each issue of the CME Bulletin, we shall try our best to include all the CME activities for the month, which are made known to the Association Secretariat. The credit points awarded by each college are herein indicated for members' reference only. While we try our best to ensure the information to be most accurate and up-to-date, members interested in any of these functions are advised to check with the respective organizers for confirmation of the details.

Pharmaceutical advertisements are welcome. For advertising rates and placement details, please contact Ms. Cynthia Chan, Executive Officer at Tel: 2527 8452, Fax: 2865 0943 or email: cynthia@hkma.org

Your comments to the HKMA CME Bulletin are mostly welcome. Please send your opinion to Dr. Choi Kin, CME Bulletin Co-ordinator, at cme@hkma.org.